

# Main Street Corridor Planning Study



## COMMUNITY FORUM

Monday, September 19, 2011  
7:00-9:00 pm

Americal Civic Center  
467 Main Street  
Wakefield

# Main Street Corridor Planning Study

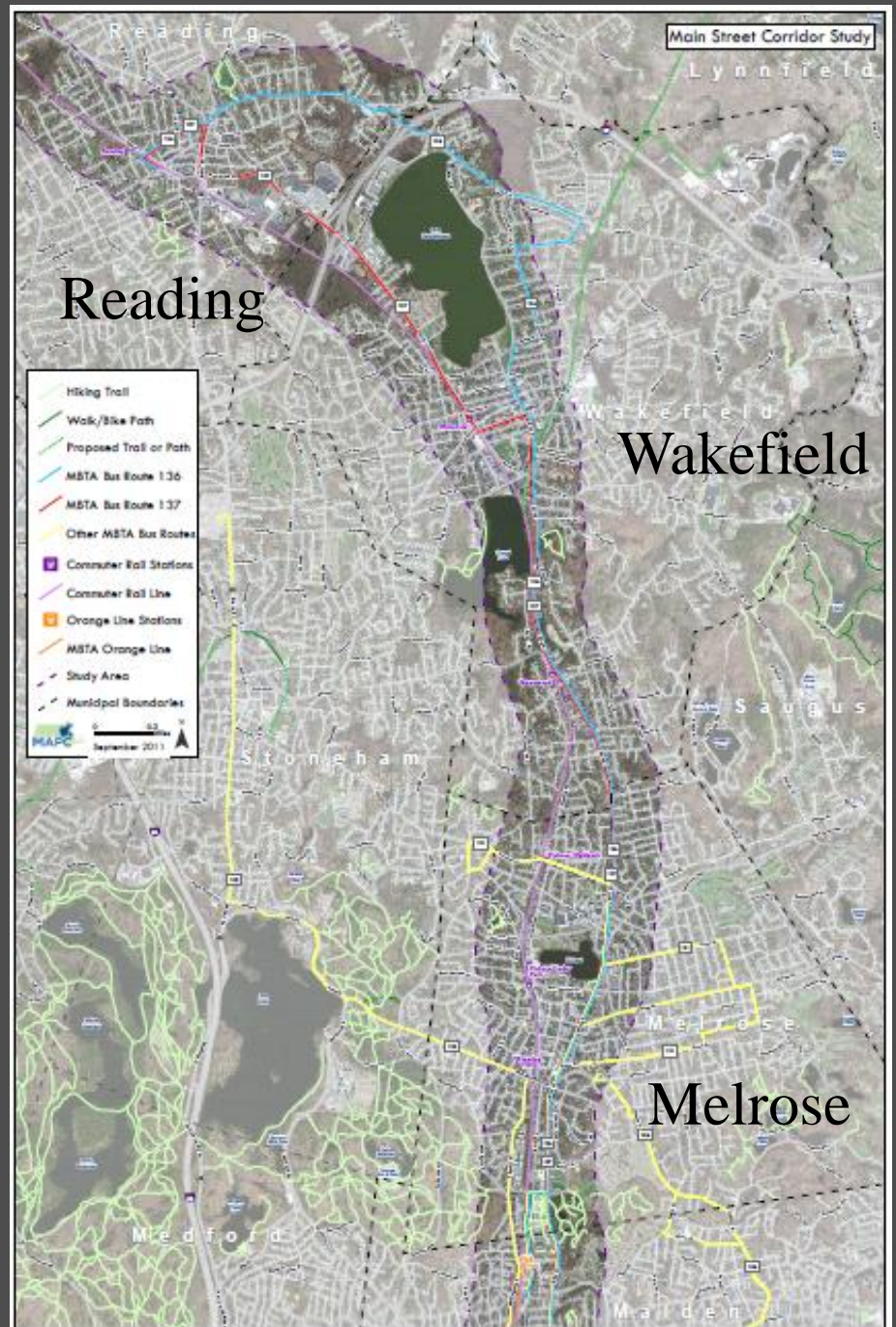
## WELCOME AND INTRODUCTION

*Paul Reavis, Wakefield Town Planner*



# MAIN STREET CORRIDOR STUDY AREA

- Reading Depot to Melrose/Malden Line
- 9+ miles
- 6 Commuter Rail Stations
- 2 MBTA Bus Lines travel entire corridor (136, 137)





# WAKEFIELD STUDY AREA

- 2 Commuter Rail Stations

Greenwood

193 daily boardings

Wakefield

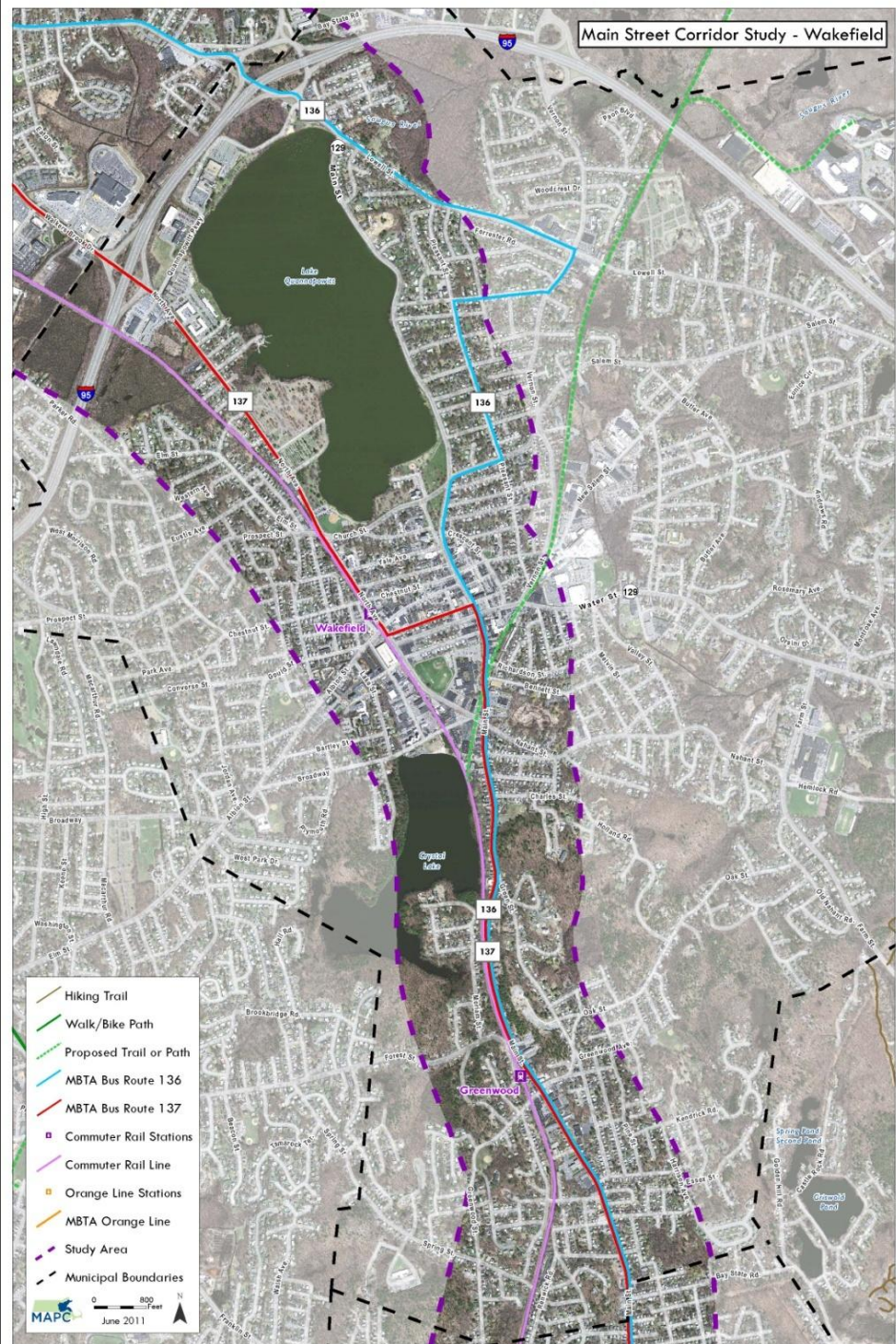
773 daily boardings

- Most Frequently Used  
Bus Stops

Main St. @ Water St.

Main St. @ Galvin Middle  
School

SOURCES: 2010 MBTA Blue Book  
CTPS Bus Counts





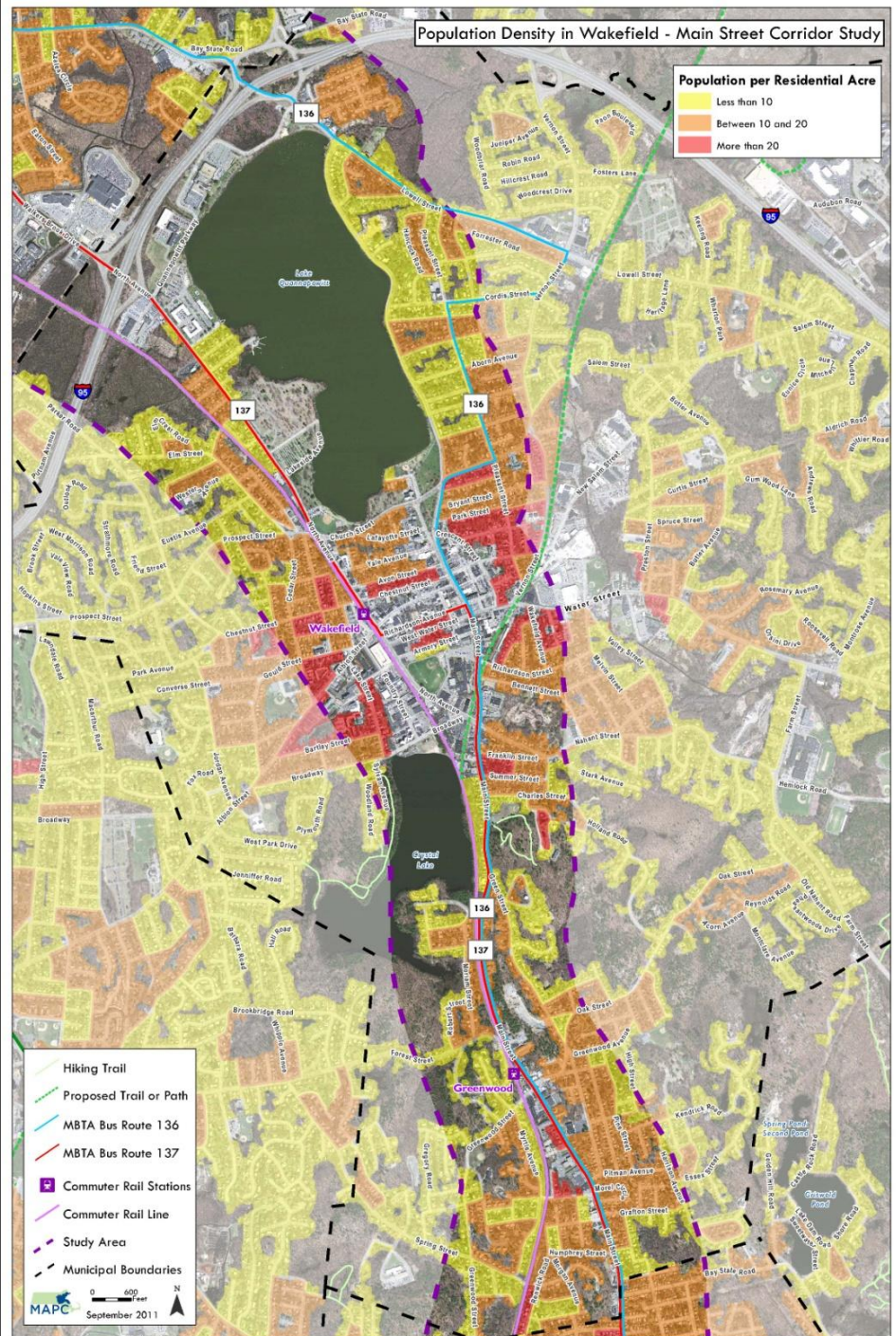
# WAKEFIELD POPULATION DENSITY

2010 Population

Melrose 26,983

Wakefield 24,932

Reading 24,747





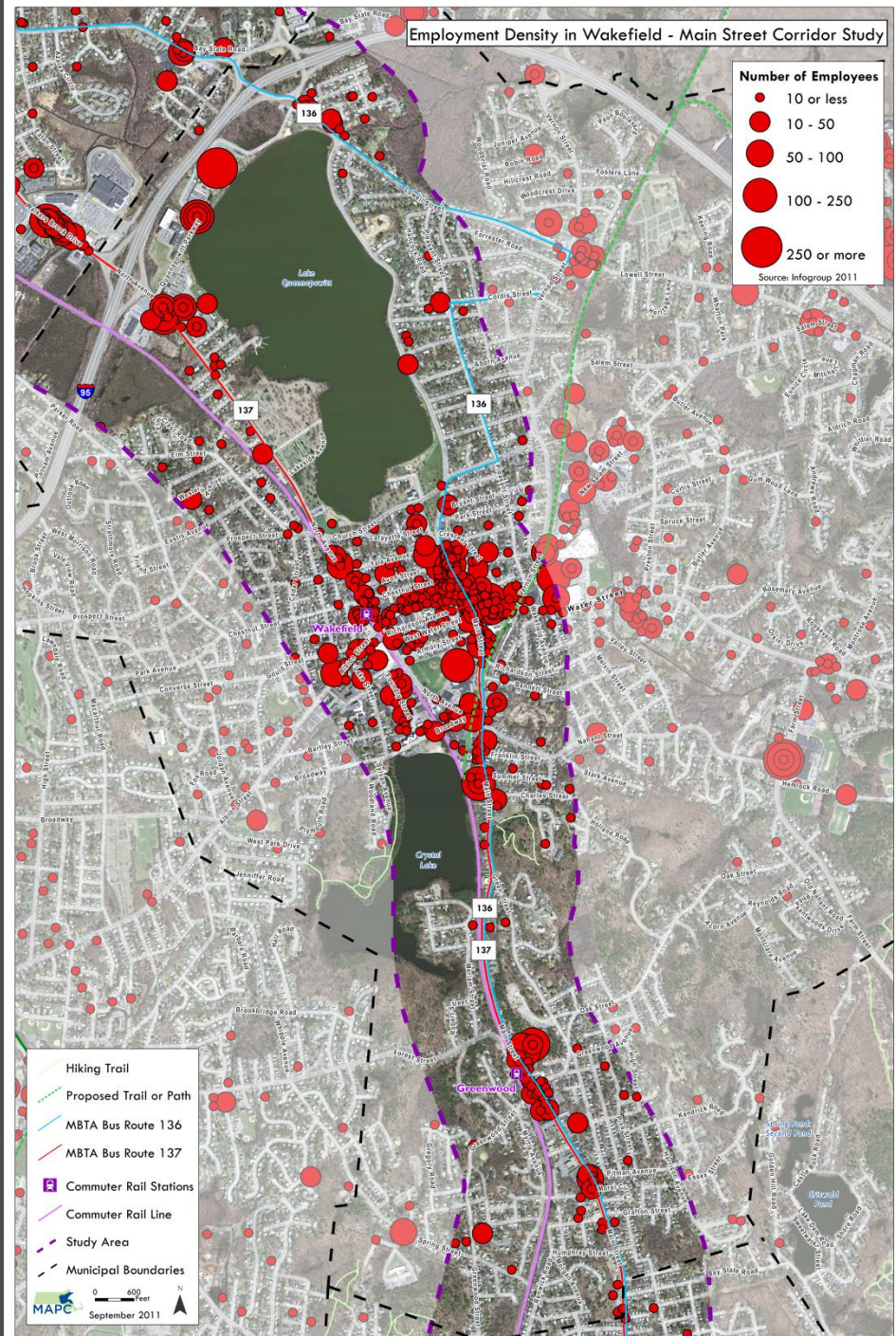
# WAKEFIELD JOBS DENSITY

2009 Employment

Melrose 5,919

Wakefield 13,664

Reading 6,232



# Main Street Corridor Planning Study

## CORRIDOR HIGHLIGHTS

Reading



*Streetscape  
Bike/Ped*

Wakefield



*Landscape/  
Recreation*

Melrose



*Activity/  
Cohesion*

- 
- 
- 

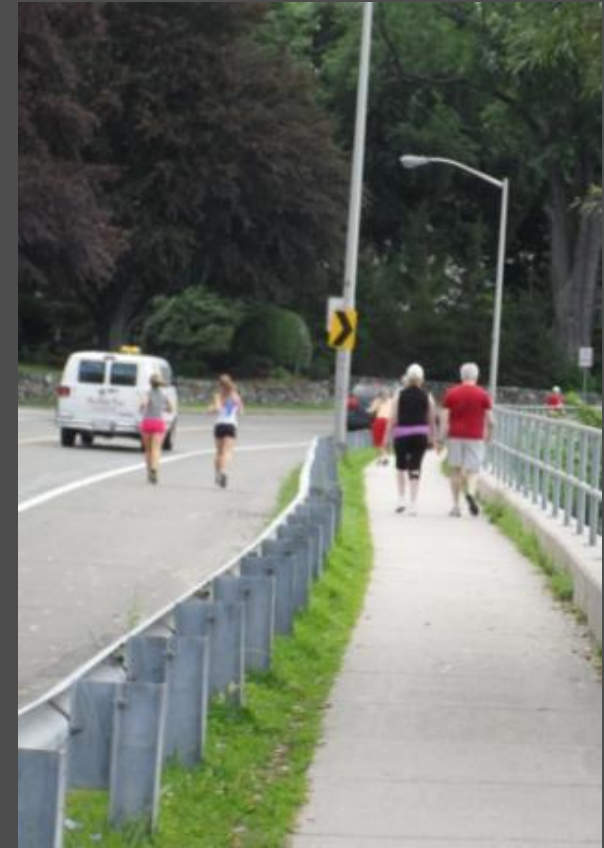
## Main Street Corridor Planning Study

# Wakefield Observations



# Main Street Corridor Planning Study

## Sidewalk Access and Condition



# Main Street Corridor Planning Study

## Crosswalks





# Main Street Corridor Planning Study

## Roadway Condition/ Signal Equipment



# Main Street Corridor Planning Study

## Pedestrian Amenities





# Main Street Corridor Planning Study

## Bicycle Amenities



# Main Street Corridor Planning Study

## Parking





# Main Street Corridor Planning Study

## Landscaping



# Main Street Corridor Planning Study

## Signage/Banners





- 
- 
- 

# Main Street Corridor Planning Study

## Unique Programs



## Adopt-a-Barrel Program

# Main Street Corridor Planning Study

## Buses





# Main Street Corridor Planning Study

## Greenwood Station *Access and Surroundings*



# Main Street Corridor Planning Study

## Greenwood Station *Vehicle and Bicycle Parking*





# Main Street Corridor Planning Study

## Greenwood Station *Benches and Shelter*



# Main Street Corridor Planning Study

## Wakefield Station *Access and Surroundings*





# Main Street Corridor Planning Study

## Wakefield Station *Vehicle and Bicycle Parking*



# Main Street Corridor Planning Study

## Wakefield Station *Benches and Shelter*





# Main Street Corridor in the Future?



Electric Vehicle Charging/Parking



Neighborhood Electric Vehicle



Bike Sharing



Car Sharing

## Main Street Corridor Planning Study

# KEY PAD QUESTIONS

Let your voice be heard!

This exercise is optional and anonymous



# Which is your favorite New England sports team?

1. Boston Celtics
2. Boston Red Sox
3. New England Patriots
4. Boston Bruins
5. They are all too good to choose just one!

# Which category best describes you?

1. Local Resident
2. Government/Community Employee
3. Local Employee/Business Owner
4. Non-Profit or Advocate
5. Other



# Where do you live?

1. Reading
2. Melrose
3. Wakefield
4. North Shore
5. Elsewhere

# What is your age?

1. 0-19
2. 20-29
3. 30-39
4. 40-49
5. 50-59
6. 60-69
7. 70 or Better



# How do you identify yourself?

1. White
2. Black or African-American
3. Hispanic or Latino
4. Asian
5. Two or more
6. Other

# How often do you use the commuter rail?

1. Almost daily
2. Between 2-4 times per week
3. About once per week
4. About once per month
5. Less than once per month

How often do you use the MBTA 136 or 137 bus?

1. Almost daily
2. Between 2-4 times per week
3. About once per week
4. About once per month
5. Less than once per month



# How often do you go to Main Street?

1. Almost daily
2. Between 2-4 times per week
3. About once per week
4. About once per month
5. Less than once per month

# Why do you most often go to Main Street?

1. Shop
2. Eat
3. School
4. Work
5. Recreation
6. Other

Are you able to access Main Street within a  
20 minute walk from where you live?

1. Yes

2. No



What mode of transportation do you most frequently use to access Main Street?

1. Personal Vehicle
2. Public Transportation
3. Shuttle Service (The Ride, etc.)
4. Walk
5. Bicycle

Would you own an electric or hybrid car?

1. Yes
2. No
3. I already own one!

If pedestrian improvements were made (e.g. sidewalk improvements, more crosswalks, additional signage) would you walk more?

1. Yes
2. Maybe
3. No



# How should roadways be designed?

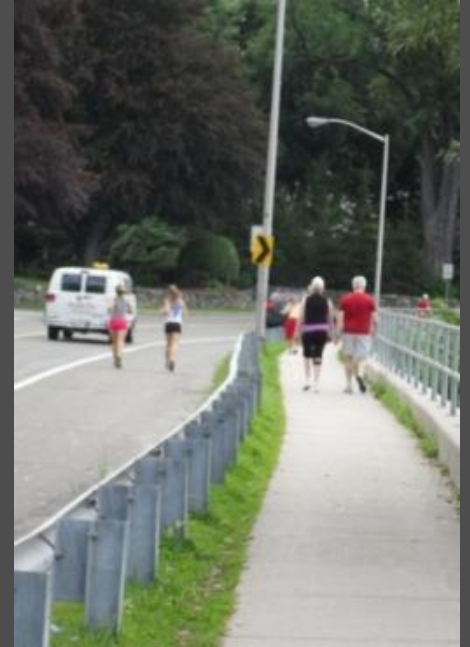
1. Prioritize vehicle travel and vehicle parking
2. Compromise between vehicle travel/parking and pedestrian and bicycle space
3. Prioritize pedestrian and bicycle space

# Which of the following is most important to you?

1. Improve pedestrian and bicycle connections
2. Improve MBTA public transportation access and service
3. New ideas and technologies such as car sharing, bike sharing, and electric vehicle charging areas
4. They are all equally important

# How important is it to improve sidewalk access and conditions along Main Street?

1. Very Important
2. Somewhat Important
3. Not Important





# How important is it to improve pedestrian amenities (e.g. more crosswalks) along Main Street?

1. Very Important
2. Somewhat Important
3. Not Important



# How important is it to improve roadway conditions and signal equipment along Main Street?

1. Very Important
2. Somewhat Important
3. Not Important



How important is it to improve bicycle amenities (e.g. bicycle racks and bicycle lanes) along Main Street?

1. Very Important
2. Somewhat Important
3. Not Important



# How important is it to improve parking along Main Street?

1. Very Important
2. Somewhat Important
3. Not Important





# How important is it to improve landscaping along Main Street?

1. Very Important
2. Somewhat Important
3. Not Important

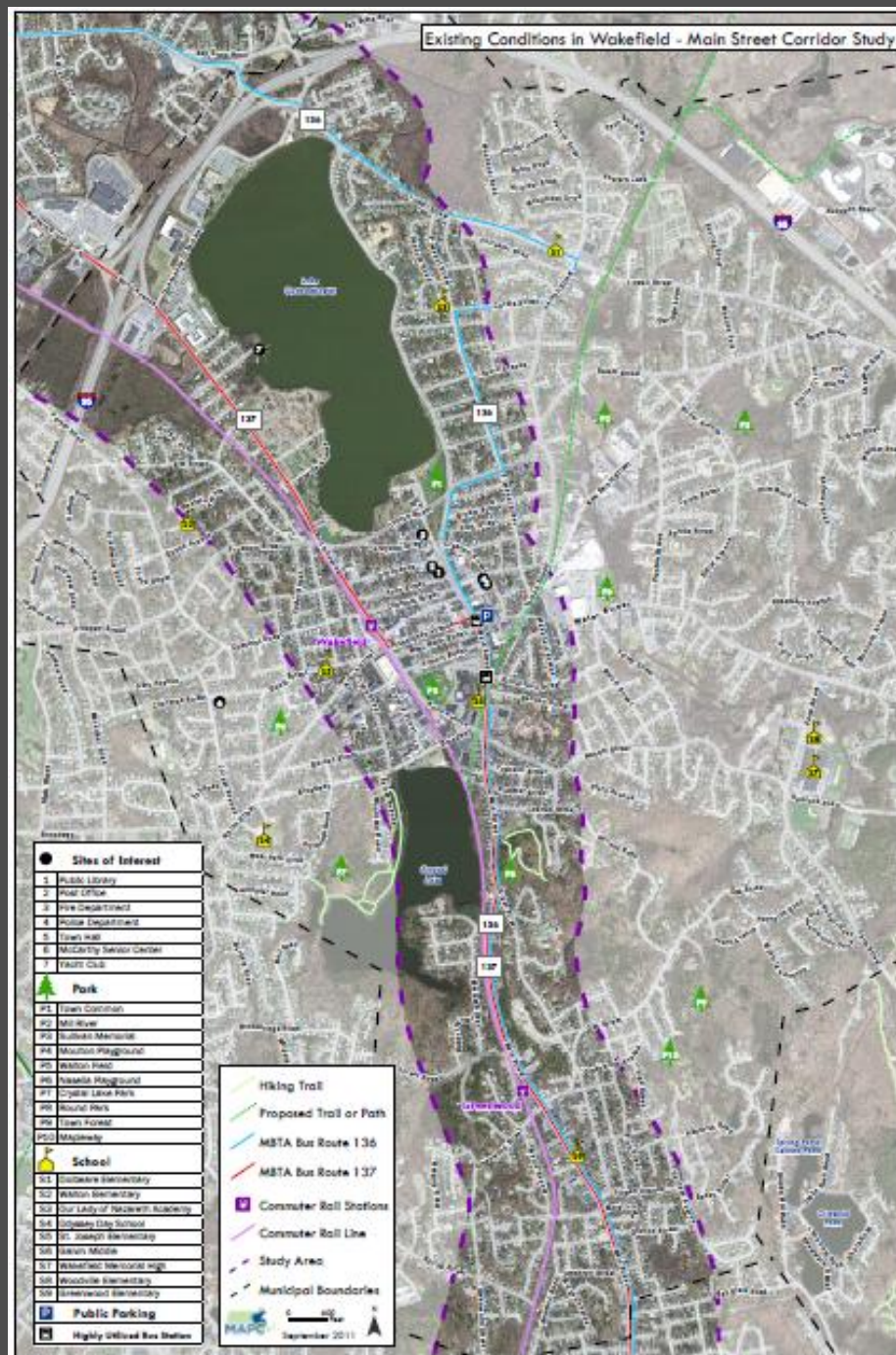


# How important is it to improve signage and banners along Main Street?

1. Very Important
2. Somewhat Important
3. Not Important



# BREAKOUT SESSION



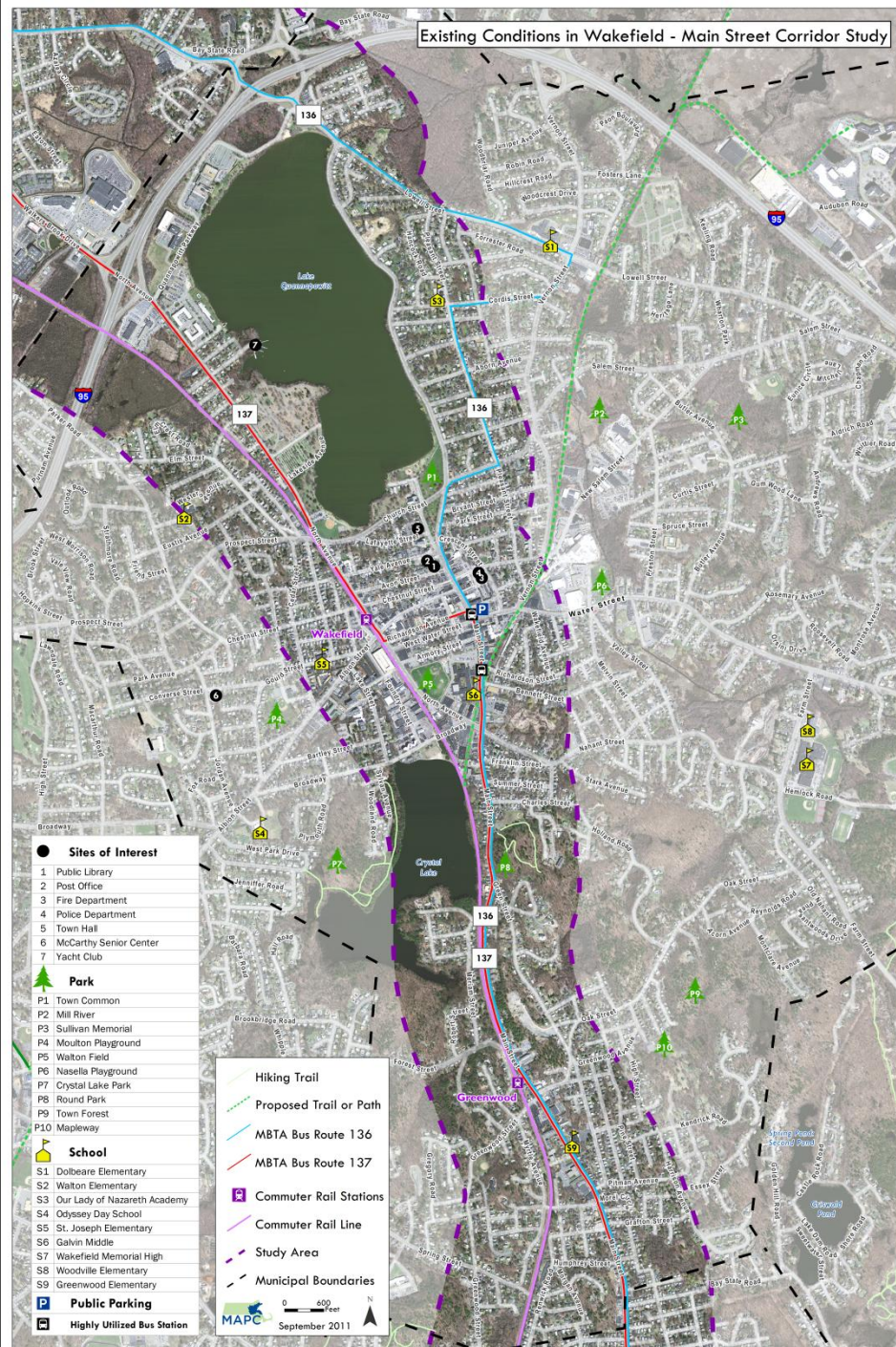
# Main Street Corridor Planning Study

## BREAKOUT SESSION

- ✓ Opportunities to Expand and Link Services with Bus, Rail, Walking and Bicycling
- ✓ Where to improve Pedestrian and Bicycle Connections
- ✓ Where to Locate New Technologies and Ideas (car sharing and electric vehicles)



# REPORT BACK



# Main Street Corridor Planning Study

## Upcoming Community Forums

### MELROSE

Wed., September 21  
from 7-9pm

Melrose City Hall  
562 Main Street

### READING

Tue., October 4  
from 7-9pm

Reading Senior Center  
49 Pleasant Street

### Project Website

[mapc.org/smart-growth/main-street](http://mapc.org/smart-growth/main-street)

### Contact - Sarah Kurpiel

[skurpiel@mapc.org](mailto:skurpiel@mapc.org)  
617-451-2770 ext 2053