

Northeast Metro Tech

Community Presentation

Breakheart Reservation





Northeast Metro Tech

Wakefield, Massachusetts

1,280 students

Chelsea, Malden, Melrose, North Reading, Reading, Revere, Saugus, Stoneham, Wakefield, Winchester, Winthrop, and Woburn

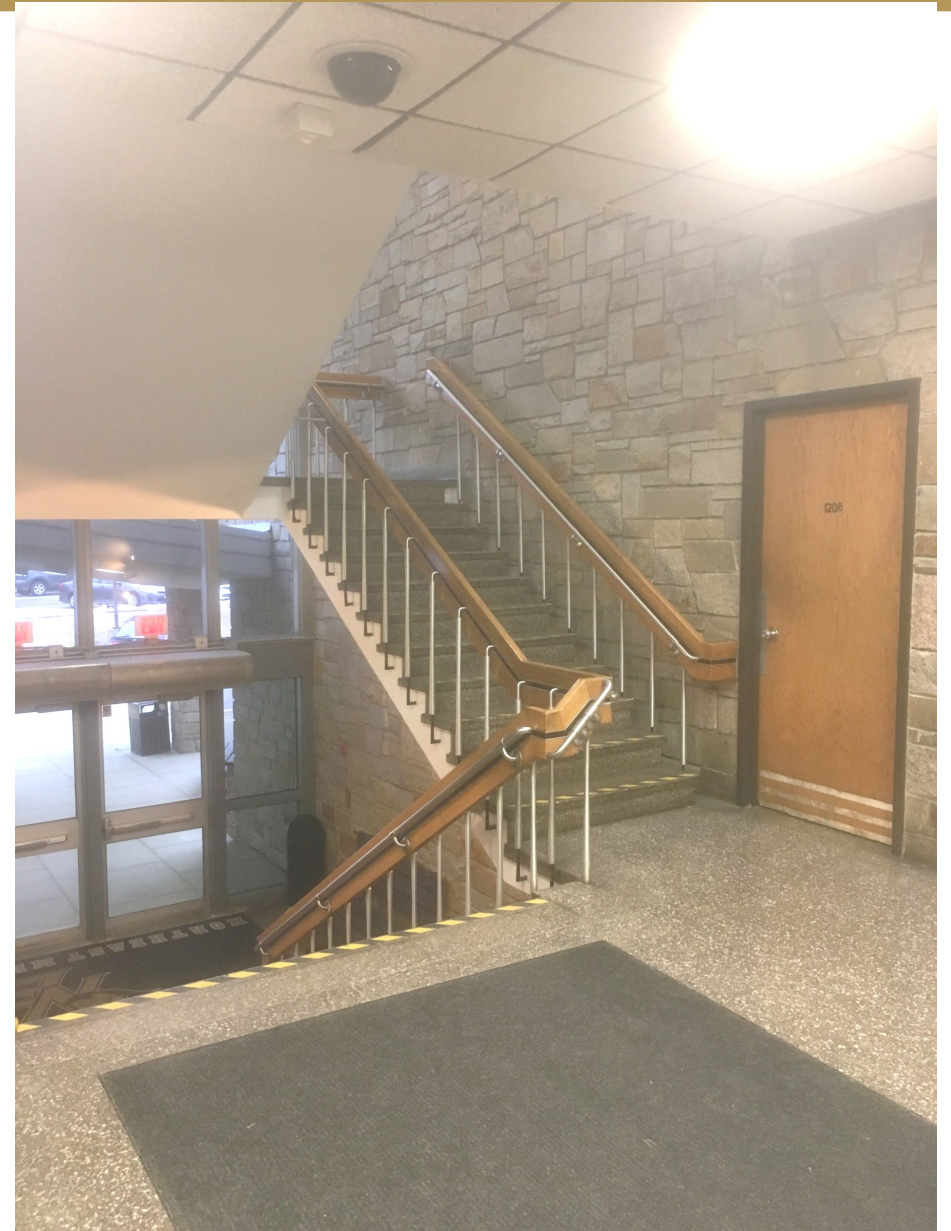
1968

240,000 sf

60 acres

Existing Conditions

- Building systems are failing and beyond their useful life and do not meet current standards
- Building envelope is poorly insulated and energy inefficient.
- Many existing classrooms and shops are undersized and do not meet current standards.
- Building is not fully accessible.
- Vehicular access is limited to a single congested driveway shared with Wakefield High School.



Why a New School?

Highlights

- Provide **21st Century Educational Environment** that best matches the **Educational Plan**
- To expand **Capacity** to 1600 students and increase from **16 to 19** Career Tech programs
- Address long-term **facilities deficiencies**
- **Best value** of 40+ options studied
- **Minimize disruption** to on-going education



Project Overview: MSBA Feasibility Study Results

Selection of Option C.3 @ 1,600 students:

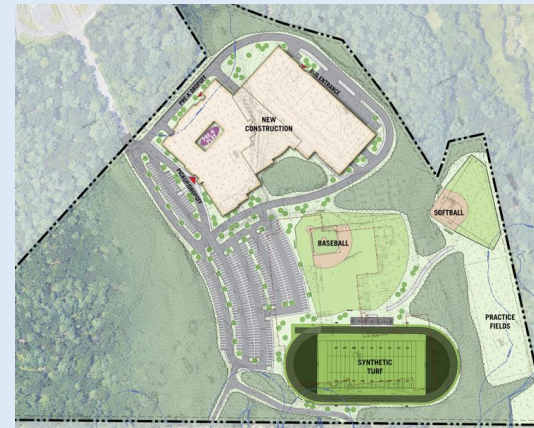
- Educational Visioning ☐ Educational Plan ☐ Develop Preliminary Options
- 40+ total options were created/evaluated at student enrollments ranging from 1,250 to 1,722 students.
- Options evaluated based on accommodation to educational plan, long-term value, minimization of impact to existing school, flexibility of design, maintenance considerations, and site impact (security/access).
- Option C.3 identified as most advantageous



**OPTION B.2
(Add/Reno)**



**OPTION C.1
(New)**

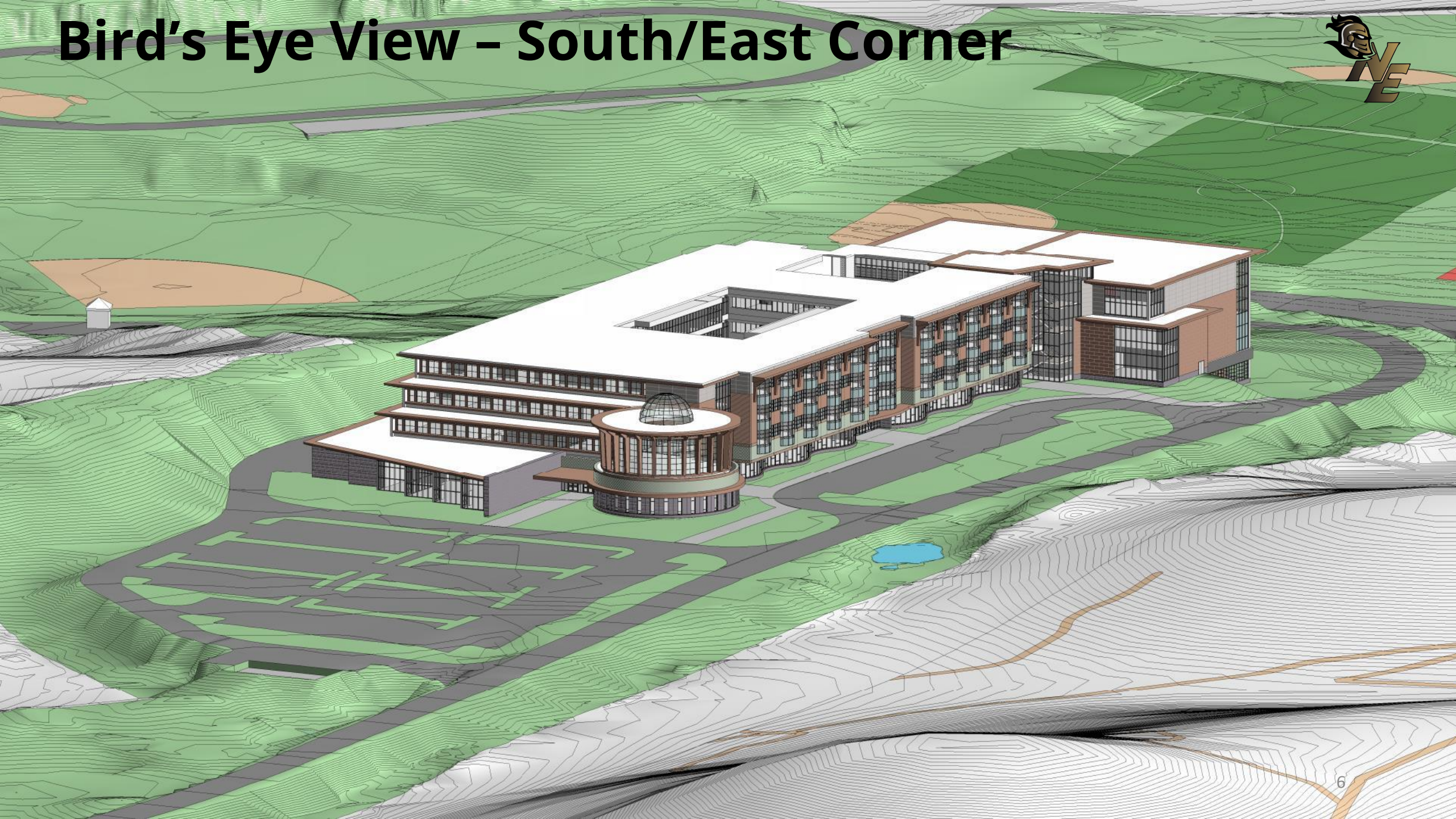


**OPTION C.2
(New)**



**OPTION C.3
(New)**

Bird's Eye View – South/East Corner





NORTHEAST METROPOLITAN
REGIONAL VOCATIONAL
HIGH SCHOOL

Front Entry Rendering

Community Outreach & Approvals

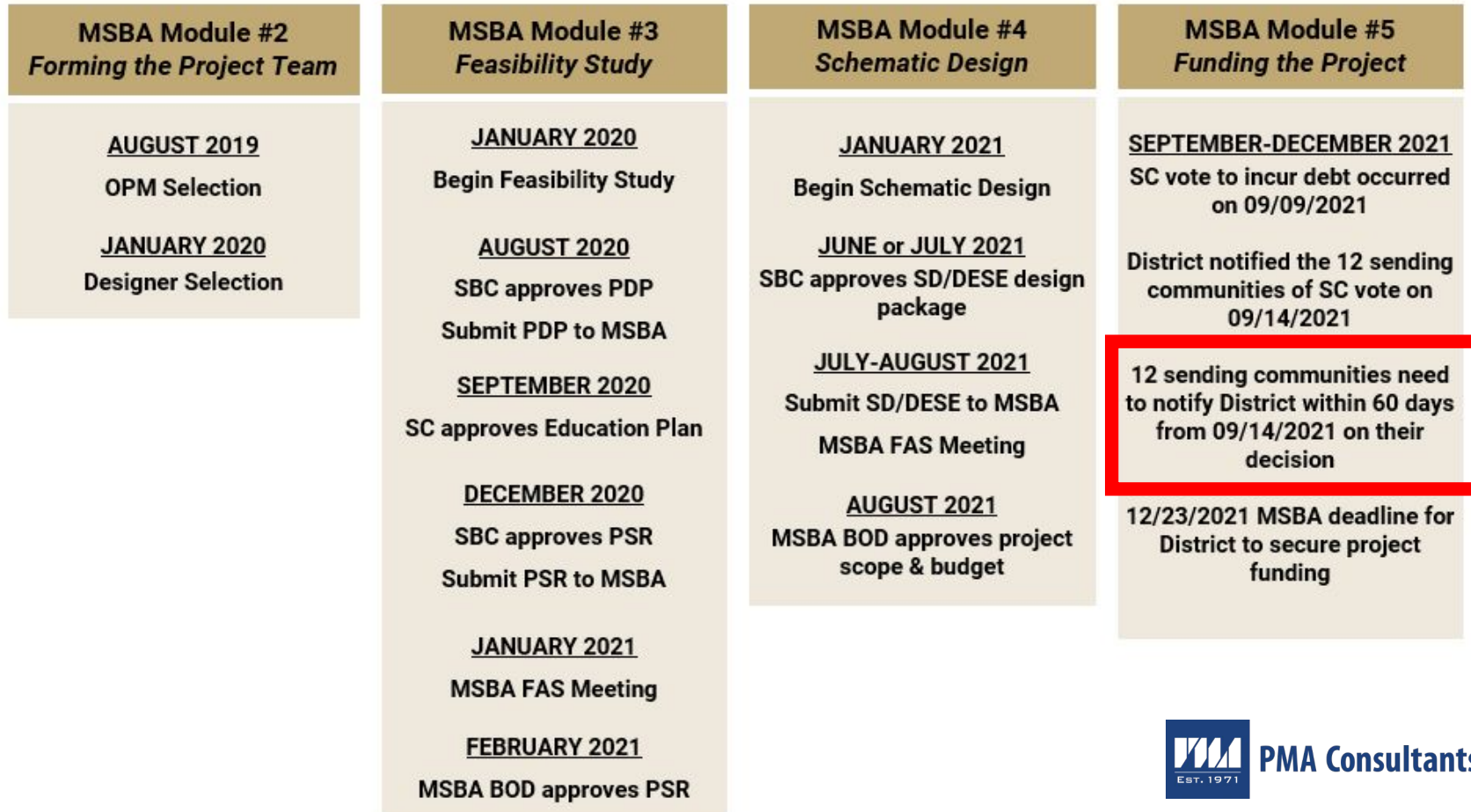
Since the MSBA invited the District to conduct a Feasibility Study in April of 2019, the District has held the following meetings related to the project:

- **On site funding** meeting with sending communities Mayors and Town Managers
- **15 School Building Committee** Meetings
- **19 Public Meetings** (School Committee Meetings, Wetlands Conservation Meetings)
- **4 Community Forums**; Neighborhood Meet and Greet, Direct Abutters Community Forum, District Wide Community Forum, and La Colaborativa (Chelsea) Forum

Note: DRA and Gilbane brought bilingual speakers to the forum with La Colaborativa meeting to help increase dialogue

- Outreach to all 12 **Historical Commissions** from each District member community
- Superintendent DiBarri has met with multiple **town managers** and **city mayors** on numerous occasions to provide updates on the progression of the project and estimated local shares.
- Ongoing direct dialogue with **Direct Abutters liaison**
- Dedicated **Project Website**
- Dedicated **Project Facebook page**

MSBA Process



Acronym glossary

BOD – Board of Directors (MSBA)
DESE – Massachusetts Department of Elementary & Secondary Education
Ed. Plan – Educational Plan
FAS – Facilities Assessment Subcommittee

ISS – Initial Space Summary
MSBA – Mass. School Building Authority
OPM – Owner's Project Manager
PDP – Preliminary Design Program
PSR – Preferred Schematic Report

SBC – School Building Committee
SC – School Committee
SD – Schematic Design

Overall Project Schedule

- MSBA Board of Directors Meeting: **8/25/2021**
- Submit DD (Design Development) Package to MSBA: **4/6/2022**
- Submit 60% CD (Construction Design) Package to MSBA: **11/4/2022**
- Submit 90% CD Package to MSBA: **4/21/2023**
- Submit 100% CDs to MSBA: targeting **7/24/2023**
- New School Opens: **December 2025**
- Abate/Demolish Exist. School, Construct Athletic Fields/Final Parking: **June 2026**

Member Municipalities: Enrollments & Potential Local Share as of Sept. 9, 2021

Town/City	Chelsea	Malden	Melrose	North Reading
Students at Northeast 10/1/2020	238	152	44	34
Local Share of New Northeast Metropolitan	18.58%	11.87%	3.43%	2.65%
Share of Total Project Costs @ \$317,422,920	58,974,732	37,664,534	10,902,892	8,424,962
Share of Local Project Costs @ \$176,570,701	32,805,485	20,951,402	6,064,880	4,686,498

Town/City	Reading	Revere	Saugus	Stoneham
Students at Northeast 10/1/2020	33	248	170	80
Local Share of New Northeast Metropolitan	2.58%	19.36%	13.27%	6.25%
Share of Total Project Costs @ \$317,422,920	8,177,169	61,452,661	42,124,808	19,823,439
Share of Local Project Costs @ \$176,570,701	4,548,660	34,183,867	23,432,490	11,027,054

Town/City	Wakefield	Winchester	Winthrop	Woburn
Students at Northeast 10/1/2020	100	11	57	114
Local Share of New Northeast Metropolitan	7.81%	0.86%	4.45%	8.90%
Share of Total Project Costs @ \$317,422,920	24,779,299	2,725,723	14,124,200	28,248,401
Share of Local Project Costs @ \$176,570,701	13,783,817	1,516,220	7,856,776	15,713,552

Thank You!

NEMT