



# TOWN OF WAKEFIELD

Department of Public Works  
William J. Lee Memorial Town Hall  
One Lafayette Street  
Wakefield, MA 01880  
781-246-6301 x4120

## Standard Operating Procedure Underground Infiltration Systems

### I. PURPOSE

Underground infiltration systems are treatment Best Management Practices (BMPs) that are designed to capture, treat and infiltrate stormwater. There are different types of subsurface structures such as precast concrete or plastic pits, chambers (manufactured pipes), perforated pipes, and galleys. Underground infiltration systems can be designed to control the quantity and quality of captured stormwater and exfiltrate stormwater for groundwater recharge.

### II. INSPECTION

Regular inspections are important to prevent against premature failure of underground infiltration systems. Underground infiltration systems should be inspected at least twice a year. All accumulated trash should be collected at this time. Inspect inlets and remove any debris that might clog the system.

### III. MAINTENANCE

Regular maintenance shall be conducted at the following intervals to maintain underground infiltration systems so they may operate efficiently and as designed.

Activity	Time of Year	Frequency
Inspect and Remove Trash	Year Round	2x per year
Inspect and Rem. Sediment	Fall	2x per year

### IV. LOCATION OF UNDERGROUND INFILTRATION SYSTEMS

- a. Town Hall  
1 Lafayette Street  
Wakefield, MA 01880

### V. ATTACHMENTS:

- a. Maintenance Report, Underground Infiltration Systems
- b. Plan, Town Hall Underground Infiltration System



VI. REVISION

These procedures contained in the SOP are reviewed as part of the NPDES MS<sub>4</sub> Annual Report development and updated as needed.

VII. EFFECTIVE:

June 2022

SIGNED:

A handwritten signature in black ink, appearing to read 'W. J. Renault, Jr.', with a stylized flourish at the end.

William J. Renault, Jr., P.E.  
Town Engineer  
Engineering Division  
Wakefield Department of Public Works



# TOWN OF WAKEFIELD

DEPARTMENT OF PUBLIC WORKS

Engineering Division

## POST-CONSTRUCTION OPERATION AND MAINTENANCE LOG – UNDERGROUND INFILTRATION CHAMBERS

Inspector's Name: \_\_\_\_\_ Date: \_\_\_\_\_

Location: \_\_\_\_\_

Inspection Type: ☐ Routine ☐ Spill ☐ Other: \_\_\_\_\_

☐ Post-Rainfall (Precipitation in Inches: \_\_\_\_\_)

Activity	Frequency	Comments
Inspect inlets and remove debris	2x per year	
Check inspection port for sediment depth	2x per year	

Additional Comments: \_\_\_\_\_

---

---

---

---

Signature:	
------------	--





TOWN OF WAKEFIELD, MASSACHUSETTS  
DEPARTMENT OF PUBLIC WORKS ENGINEERING DIVISION

# TOWN HALL PARKING LOT RECONSTRUCTION PROJECT

## GENERAL NOTES

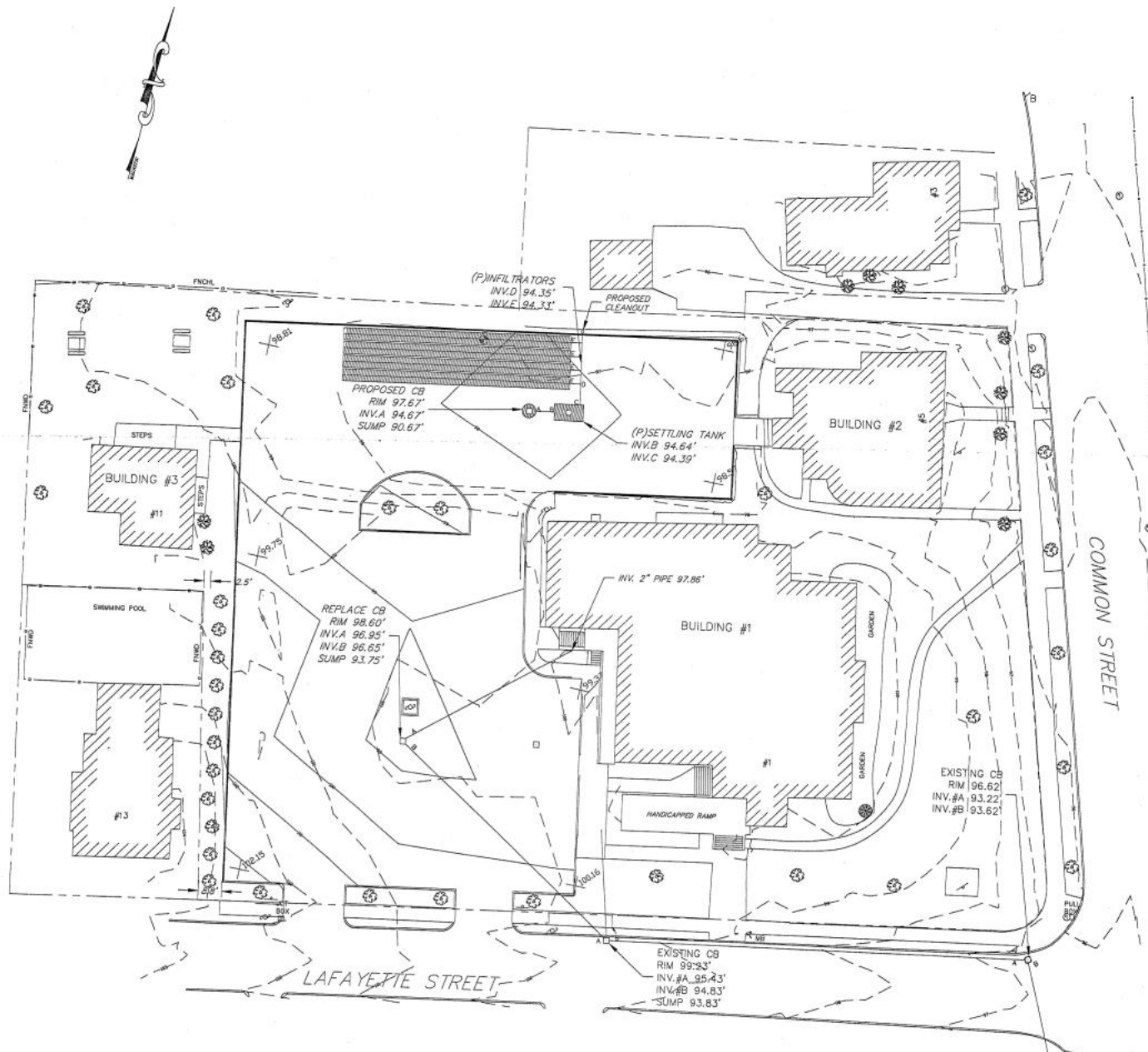
THE LOCATION OF ALL UTILITIES AND SUB-SURFACE STRUCTURES ARE FROM MUNICIPAL AND CORPORATE RECORDS AND ARE APPROXIMATE AS TO THEIR SIZE, LOCATION, AND DEPTH. THEY ARE INDICATED ON THESE DRAWINGS TO PROVIDE BIDDERS WITH A GENERAL IDEA OF THE EXISTING CONDITIONS WHICH ARE TO BE CONFIRMED BY THE BIDDER. IT IS UNDERSTOOD AND AGREED THAT EACH BIDDER SHALL MAKE EXAMINATIONS IN THE FIELD BY VARIOUS METHODS AND OBTAIN INFORMATION FROM UTILITY CORPORATIONS AND OTHERS AS TO THE LOCATION OF ALL SUB-SURFACE STRUCTURES.



LOCUS PLAN

## LIST OF DRAWINGS

- SHEET 1 EXISTING CON
- SHEET 2 SITE PLAN
- SHEET 3 GRADING/UTI
- SHEET 4 PLANTING PLA
- SHEET 5 CONSTRUCTION
- SHEET 6 CONSTRUCTION



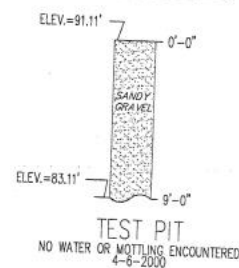
SCALE: 1" = 20'

20 10 0 20 40

# SCOPE OF WORK:

- 1) DEMOLISH EXISTING GARAGE AND CARPORT
- 2) CUT DOWN SELECTED TREES
- 3) REMOVE HANDI-CAP RAMP IN REAR OF BUILDING
- 4) MOVE SELECTED U-POLES TO APPROPRIATE LOCATION
- 5) REMOVE CATCH BASIN AND RELAY PIPE
- 6) REGRADE PARKING LOT
- 7) INSTALL TWO NEW CATCH-BASINS, WATER QUALITY INLET, AND
- 8) REMOVE EXISTING CONCRETE CURBING AND RESET FOR NEW P ENTRANCES
- 9) INSTALL BITUMINOUS BERM AND CONCRETE CURBING IN APPROP
- 10) INSTALL BITUMINOUS SIDEWALK ALONG BUILDING
- 11) PAVE ENTIRE LOT WITH 2" OF BINDER
- 12) PAVE ENTIRE LOT WITH 1.5" OF TOP COURSE
- 13) PAINT PARKING LINES
- 14) PLANT GRASS AND TREES

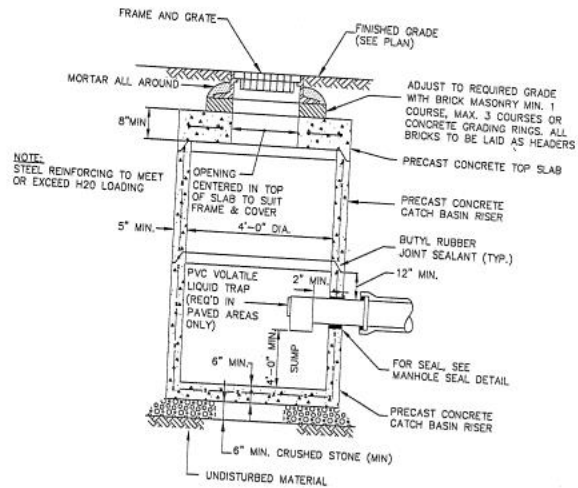
## SOIL TEST LOG



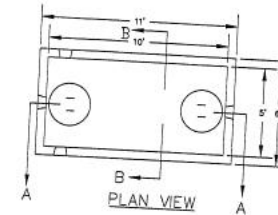
## LEGEND

- GRANITE CURBING
- BITUMINOUS BERM
- 1 FT CONTOUR
- BURIED ELECTRICAL
- BURIED GAS
- BURIED SEWERLINE
- BURIED WATERLINE
- BURIED TELEPHONE
- BUSH
- SOFTWOOD TREE
- HARDWOOD TREE
- TELEPHONE MANHOLE
- ELECTRICAL MANHOLE
- SEWER MANHOLE
- DRAIN MANHOLE
- MANHOLE, TYPE UNKNOWN
- CATCH BASIN
- UTILITY POLE
- QUY
- MAILBOX
- SIGN
- LIGHT
- GAS VALVE
- WATER VALVE
- HYDRANT
- SURVEY CONTROL POINT
- IRON PIPE
- NAIL
- BOUND
- PICNIC TABLE

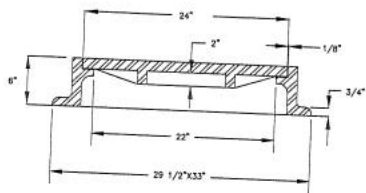
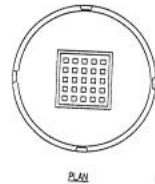
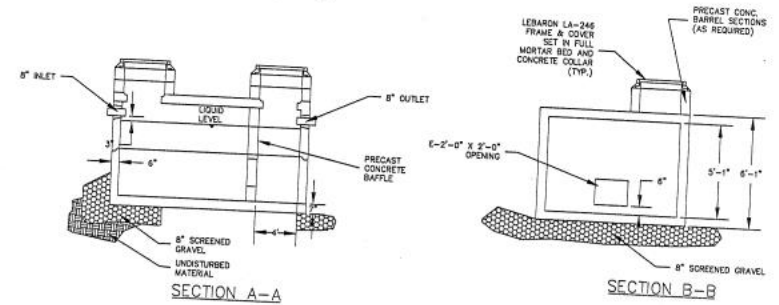




PRECAST CATCH BASIN DETAIL  
N.T.S.



NOTES: -DESIGN LOADING - AASHTO HS 20-44  
-CONSTRUCTION JOINT - SEALED WITH 1" DIA. BUTYL RUBBER OR EQUIVALENT



CROSSSECTION OF THE  
RECHARGER 330HD FOR  
PAVED H-20 TRAFFIC  
NOT TO SCALE

