



TOWN OF WAKEFIELD

Department of Public Works
William J. Lee Memorial Town Hall
One Lafayette Street
Wakefield, MA 01880
781-246-6301 x4120

Standard Operating Procedure Oil and Sediment Separator

I. PURPOSE

Oil and sediment separators are treatment Best Management Practices (BMPs) that are designed to capture and treat stormwater. Oil and sediment separators are underground tanks with two or three chambers designed to remove heavy particulates, floating debris, and hydrocarbons from stormwater. Oil and sediment separators are typically used in series with other BMPs to achieve required TSS removal.

II. INSPECTION

Regular inspections are important to prevent against resuspension of sediment in oil and sediment separators. Oil and sediment separators should be inspected at monthly and after every major storm. All accumulated trash should be collected at this time. Inspect inlets and remove any debris that might clog the system.

III. MAINTENANCE

Regular maintenance shall be conducted at the following intervals to maintain oil and sediment separators so they may operate efficiently and as designed.

Activity	Time of Year	Frequency
Inspect units	Year Round	At least monthly
Clean units	Spring and Fall	2x per year

Polluted water and sediments removed from and oil and sediment separator should be disposed of in accordance with all applicable local, state and federal laws and regulations including M.G.L.c. 21C and 310 CMR 30.00.

IV. LOCATION OF OIL AND SEDIMENT SEPARATORS

- a. Town Hall
1 Lafayette Street
Wakefield, MA 01880
- b. Harris M. Dolbeare School



340 Lowell Street
Wakefield, MA 01880

V. ATTACHMENTS:

- a. Maintenance Report, Oil and Sediment Separators
- b. Plan, Town Hall Underground Infiltration System

VI. REVISION

These procedures contained in the SOP are reviewed as part of the NPDES MS₄ Annual Report development and updated as needed.

VII. EFFECTIVE:

June 2022

SIGNED:

A handwritten signature in black ink, appearing to read 'W. Renault Jr.', with a stylized flourish at the end.

William J. Renault, Jr., P.E.
Town Engineer
Engineering Division
Wakefield Department of Public Works



TOWN OF WAKEFIELD

DEPARTMENT OF PUBLIC WORKS

Engineering Division

POST-CONSTRUCTION OPERATION AND MAINTENANCE LOG – OIL/SEDIMENT SEPARATORS

Inspector's Name: _____ Date: _____

Location: _____

Inspection Type: ☐ Routine ☐ Spill ☐ Other: _____

☐ Post-Rainfall (Precipitation in Inches: _____)

Activity	Frequency	Comments
Inspect units	Monthly and after every major storm	
Clean units	2x per year	

Additional Comments: _____

Signature:	
------------	--





TOWN OF WAKEFIELD, MASSACHUSETTS
DEPARTMENT OF PUBLIC WORKS ENGINEERING DIVISION

TOWN HALL PARKING LOT RECONSTRUCTION PROJECT

GENERAL NOTES

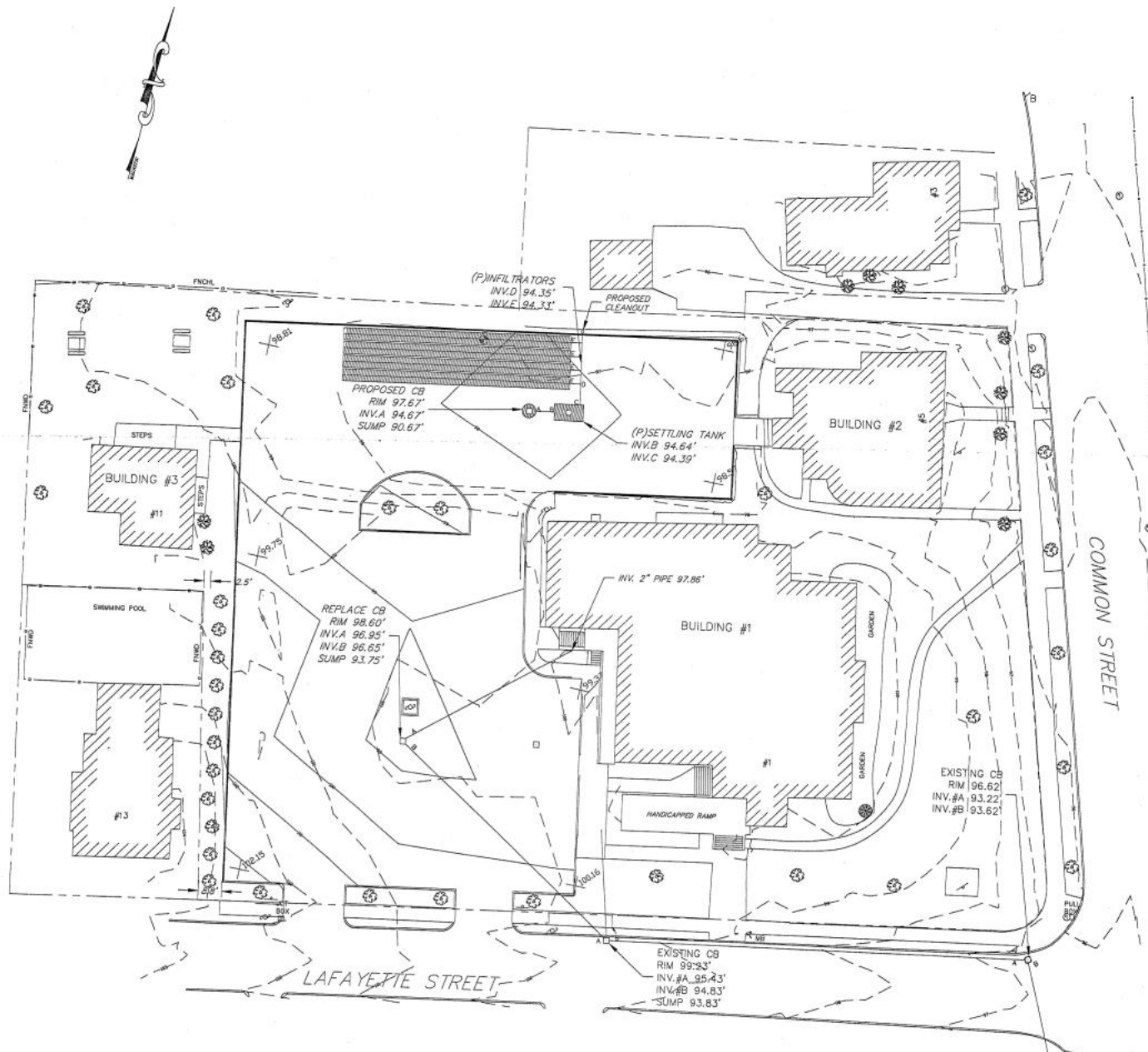
THE LOCATION OF ALL UTILITIES AND SUB-SURFACE STRUCTURES ARE FROM MUNICIPAL AND CORPORATE RECORDS AND ARE APPROXIMATE AS TO THEIR SIZE, LOCATION, AND DEPTH. THEY ARE INDICATED ON THESE DRAWINGS TO PROVIDE BIDDERS WITH A GENERAL IDEA OF THE EXISTING CONDITIONS WHICH ARE TO BE CONFIRMED BY THE BIDDER. IT IS UNDERSTOOD AND AGREED THAT EACH BIDDER SHALL MAKE EXAMINATIONS IN THE FIELD BY VARIOUS METHODS AND OBTAIN INFORMATION FROM UTILITY CORPORATIONS AND OTHERS AS TO THE LOCATION OF ALL SUB-SURFACE STRUCTURES.



LOCUS PLAN

LIST OF DRAWINGS

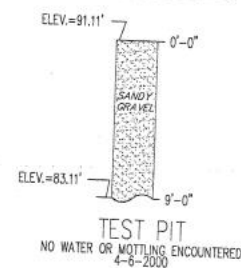
- SHEET 1 EXISTING CON
- SHEET 2 SITE PLAN
- SHEET 3 GRADING/UTI
- SHEET 4 PLANTING PLA
- SHEET 5 CONSTRUCTION
- SHEET 6 CONSTRUCTION



SCOPE OF WORK:

- 1) DEMOLISH EXISTING GARAGE AND CARPORT
- 2) CUT DOWN SELECTED TREES
- 3) REMOVE HANDI-CAP RAMP IN REAR OF BUILDING
- 4) MOVE SELECTED U-POLES TO APPROPRIATE LOCATION
- 5) REMOVE CATCH BASIN AND RELAY PIPE
- 6) REGRADE PARKING LOT
- 7) INSTALL TWO NEW CATCH-BASINS, WATER QUALITY INLET, AND
- 8) REMOVE EXISTING CONCRETE CURBING AND RESET FOR NEW P ENTRANCES
- 9) INSTALL BITUMINOUS BERM AND CONCRETE CURBING IN APPROP
- 10) INSTALL BITUMINOUS SIDEWALK ALONG BUILDING
- 11) PAVE ENTIRE LOT WITH 2" OF BINDER
- 12) PAVE ENTIRE LOT WITH 1.5" OF TOP COURSE
- 13) PAINT PARKING LINES
- 14) PLANT GRASS AND TREES

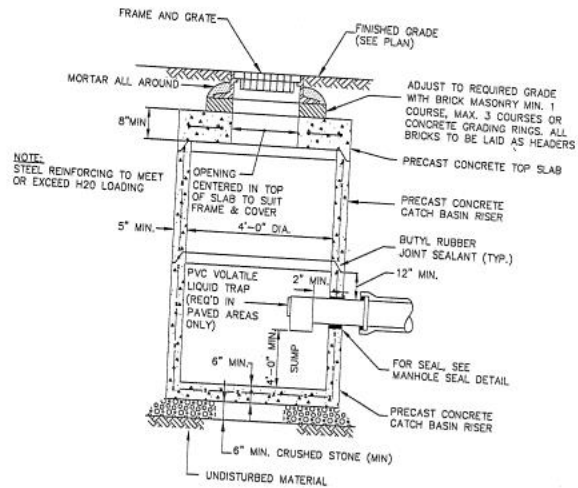
SOIL TEST LOG



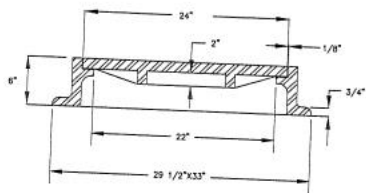
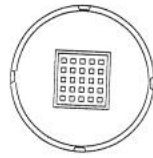
LEGEND

- GRANITE CURBING
- BITUMINOUS BERM
- 1 FT CONTOUR
- BURIED ELECTRICAL
- BURIED GAS
- BURIED SEWERLINE
- BURIED WATERLINE
- BURIED TELEPHONE
- BUSH
- SOFTWOOD TREE
- HARDWOOD TREE
- TELEPHONE MANHOLE
- ELECTRICAL MANHOLE
- SEWER MANHOLE
- DRAIN MANHOLE
- MANHOLE, TYPE UNKNOWN
- CATCH BASIN
- UTILITY POLE
- QUY
- MAILBOX
- SIGN
- LIGHT
- GAS VALVE
- WATER VALVE
- HYDRANT
- SURVEY CONTROL POINT
- IRON PIPE
- NAIL
- BOUND
- PICNIC TABLE

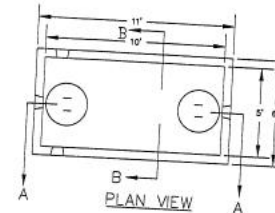




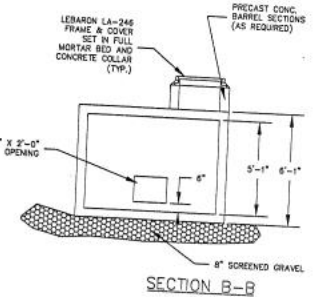
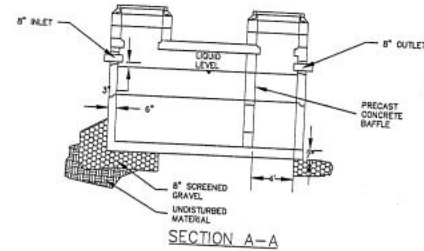
PRECAST CATCH BASIN DETAIL
N.T.S.



CATCH BASIN RIM AND GRATE DETAIL
(LEBARON LF 246 OR APPROVED EQUAL)



NOTES: -DESIGN LOADING - AASHTO HS 20-44
-CONSTRUCTION JOINT - SEALED WITH 1" DIA. BUTYL RUBBER OR EQUIVALENT



WATER QUALITY INLET
NOT TO SCALE

CROSSSECTION OF THE
RECHARGER 330HD FOR
PAVED H-20 TRAFFIC
NOT TO SCALE

