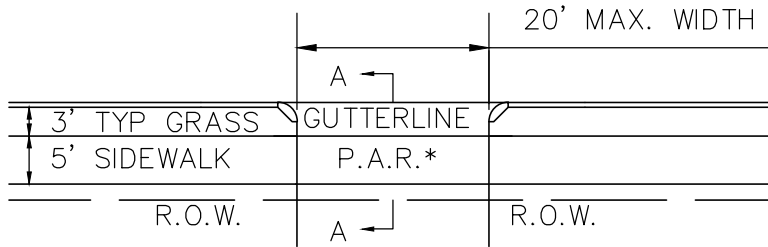
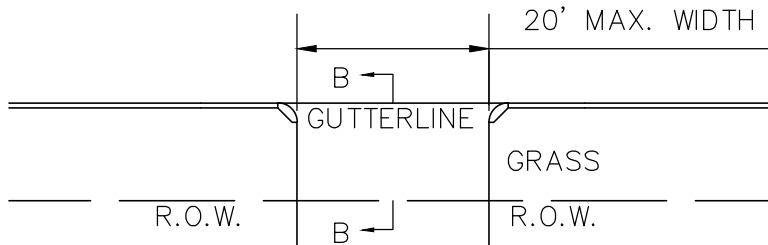


RESIDENTIAL DRIVEWAYS WITH CURB/BERM AND SIDEWALK

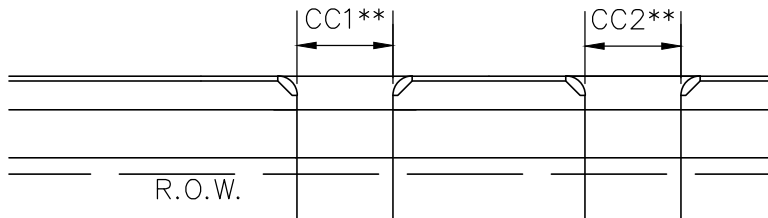


* PEDESTRIAN
ACCESS ROUTE

RESIDENTIAL DRIVEWAYS WITH CURB/BERM AND NO SIDEWALK

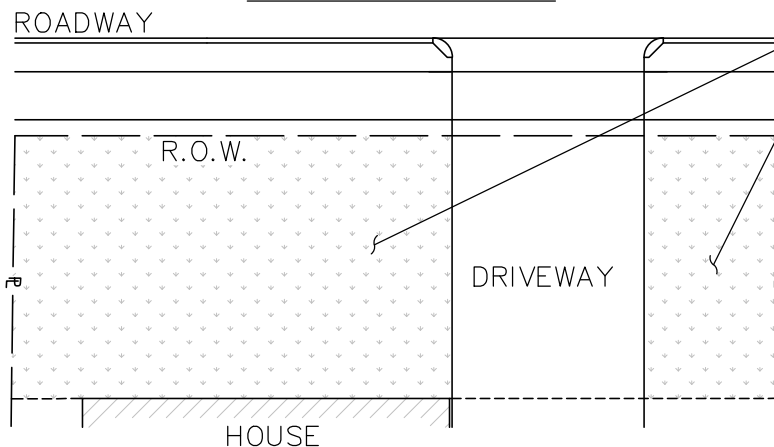


RESIDENTIAL DRIVEWAYS WITH MULTIPLE CURB CUTS



** CC1, CC2 SHALL
NOT EXCEED 20'

RESIDENTIAL DRIVEWAYS FRONT YARD OPEN SPACE REQUIREMENT



MIN. 60% OF FRONT YARD
MAINTAIN AS OPEN AREA
WITHOUT PARKING

NOTES:

1. DRIVEWAY DIMENSIONS PER
TOWN OF WAKEFIELD
ZONING BYLAWS §190-31 &
190-37
2. A DRIVEWAY IN ANY
RESIDENTIAL DISTRICT
SHALL NOT SERVE MORE
THAN ONE LOT.

DRAFT



ENGINEERING DIVISION - WAKEFIELD PUBLIC WORKS

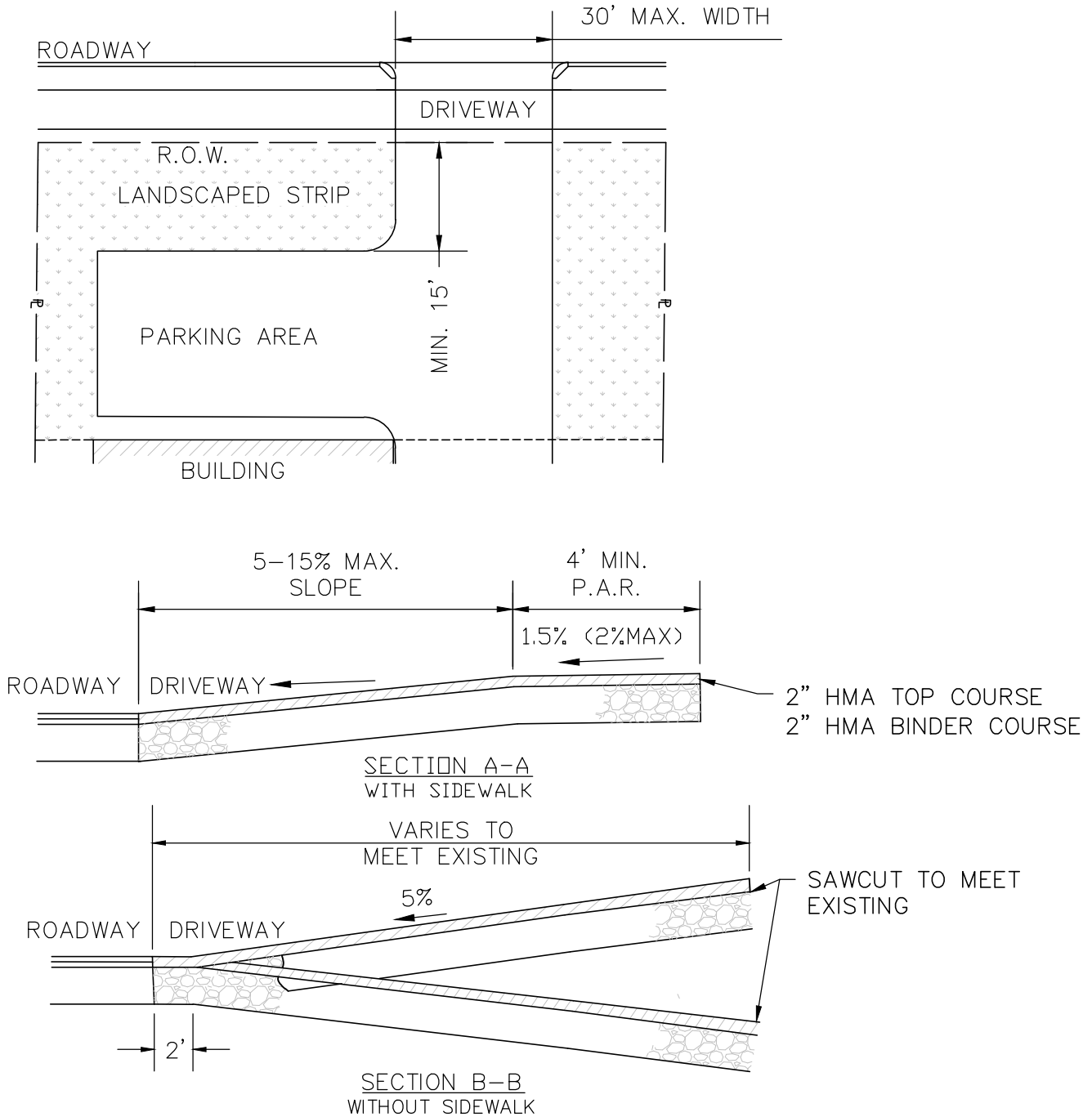
DESIGN AND CONSTRUCTION STANDARDS
TYPICAL DRIVEWAY DETAIL 1

SCALE: NTS

DETAIL #: RS-17A

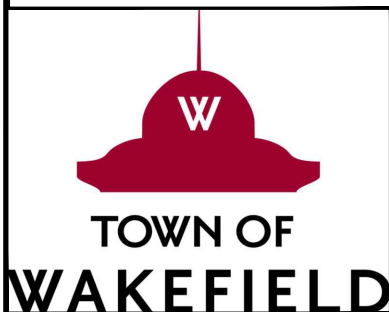
DATE: MAY 22 2023

BUSINESS AND INDUSTRIAL DISTRICT DRIVEWAYS
FRONT YARD PARKING REQUIREMENT



NOTE:
SLOPE APRON TO PREVENT RUNOFF FROM
LEAVING ROADWAY.

DRAFT



ENGINEERING DIVISION - WAKEFIELD PUBLIC WORKS

DESIGN AND CONSTRUCTION STANDARDS
TYPICAL DRIVEWAY DETAIL 2

SCALE: NTS

DETAIL #: RS-17B

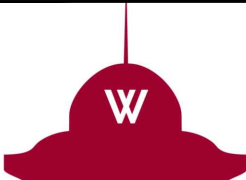
DATE: MAY 22 2023

ALL DRIVEWAYS MUST MEET THE SIGHT LINE REQUIREMENTS LISTED FOR THE SPEED LIMIT OF THE STREET THE DRIVEWAY ENTERS.

Minimum Required Sight Distance	
Design Speed (MPH)	Sight Distance for passenger cars (ft)
25	280
30	335
35	390
40	445
45	500

Note: It is the applicants' responsibility to review the conditions at the location of the proposed driveway, and ensure that additional sight distance is not required.
 *Reference A.A.S.H.T.O. A Policy on Geometric Design of Highways and Streets, Table 9-6, Design Intersection Sight Distance- Left Turn from Stop, 2011 version.

DRAFT

 TOWN OF WAKEFIELD	ENGINEERING DIVISION - WAKEFIELD PUBLIC WORKS		
	DESIGN AND CONSTRUCTION STANDARDS TYPICAL DRIVEWAY DETAIL 3		
	SCALE: NTS	DETAIL #: RS-17C	DATE: MAY 22 2023