

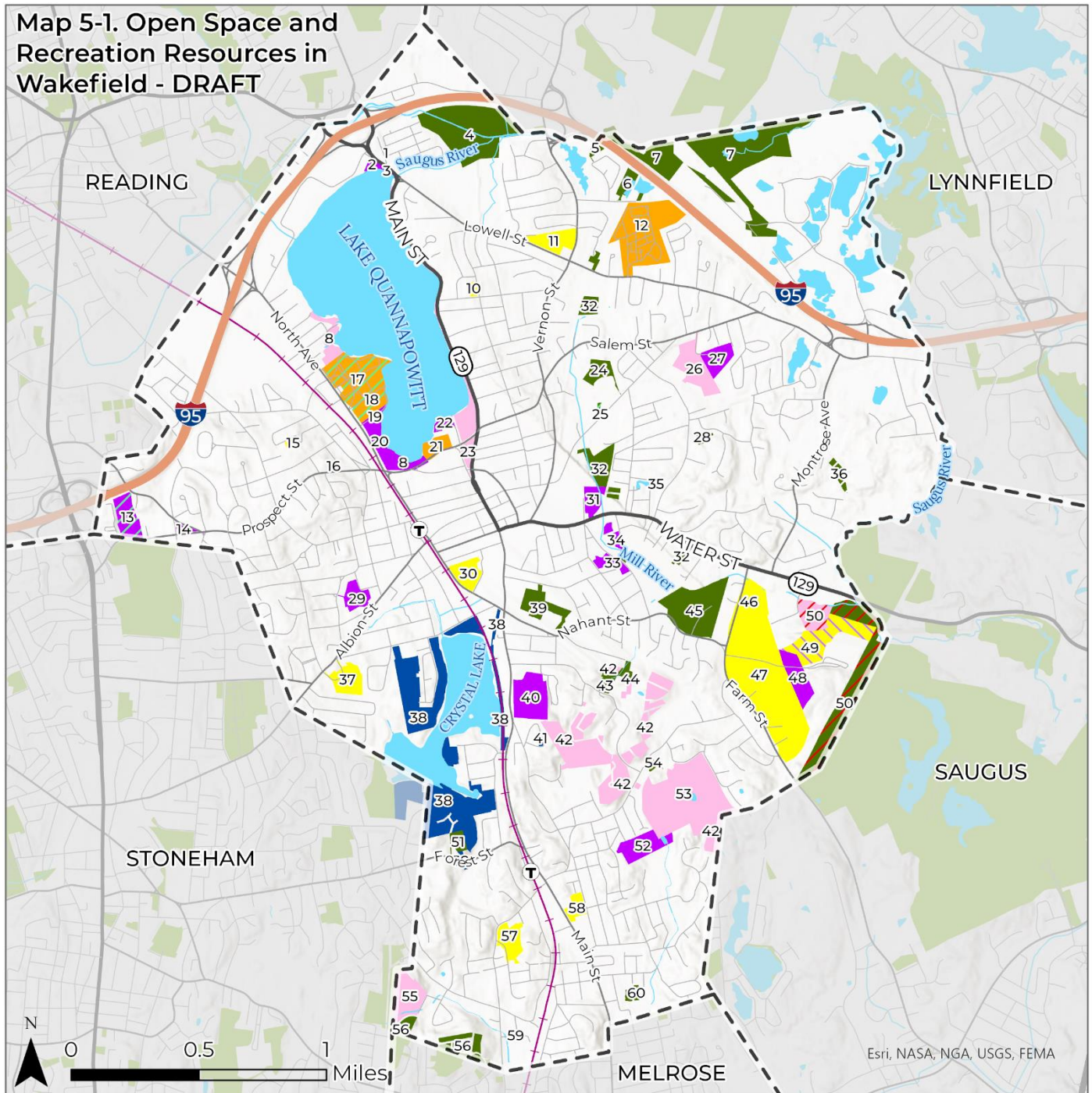
Wakefield Open Space and Recreation Plan

Map 5-1. Open Space and Recreation Resources in Wakefield - DRAFT

See corresponding numbers on Map 5-1.

- | | |
|---|---|
| 1. Col. Connolly Park | 31. Nasella Playground |
| 2. Lowell Street Conservation Area | 32. Mill River Conservation Area |
| 3. Gertrude Spaulding Park | 33. Paddy Heights Vet Park |
| 4. Old Town Wells/Pumping Station | 34. Fernald Field (aka Little League Field) |
| 5. Paon Boulevard Conservation Area | 35. Perham Street Conservation Area |
| 6. Fosters Lane Conservation Area | 36. Montrose Avenue Conservation Restriction |
| 7. Reedy Meadow Conservation Area | 37. Doyle School |
| 8. Quannapowitt Lakeshore | 38. Crystal Lake Watershed |
| 9. Lower Common | 39. Strong's Meadow (former Franklin School) |
| 10. Hurd School | 40. J.J. Round Park |
| 11. Dolbeare School | 41. Water Tower |
| 12. Forest Glade Cemetery | 42. Emerald Necklace Conservation Area |
| 13. Bear Hill Country Club | 43. Holland Road Conservation Area |
| 14. The Triangle at Prospect and Hopkins Streets | 44. Stark Avenue Conservation Area |
| 15. Walton School | 45. Nahant Street Pit |
| 16. West Ward School | 46. Woodville School |
| 17. Lakeside Cemetery | 47. Wakefield Memorial High School |
| 18. Jewish Cemeteries | 48. Landrigan Field |
| 19. Hall Park | 49. Northeast Metropolitan Regional Vocational
High School |
| 20. Veteran's Field | 50. Breakheart Reservation |
| 21. Old Cemetery | 51. Forest Street Conservation Area |
| 22. Spaulding Playground | 52. Mapleway Playground |
| 23. Upper Common | 53. Town Forest |
| 24. Mill River Floodplain (Wakefield School
Department property) | 54. Melrose Avenue Conservation Area |
| 25. Mill River Floodplain (CRESTA property) | 55. Spring Street Park |
| 26. Sullivan Playground Ext. | 56. Grandview Conservation Area |
| 27. Sullivan Playground | 57. Yeuell School |
| 28. Gumwood/Butler Conservation Area | 58. Greenwood School |
| 29. Moulton Playground | 59. Linden Street Pumping Station |
| 30. Galvin Middle School | 60. Findlay Street Conservation Area |

Map 5-1. Open Space and Recreation Resources in Wakefield - DRAFT



Legend

- Municipal Boundaries
- Surface Water**
 - Lakes, Ponds, and Rivers
- Transportation**
 - Interstate Highway
 - State Route
 - Major Road
 - Local Road
 - MBTA Commuter Rail
 - MBTA Commuter Rail
 - MBTA Station

Open Space and Recreation Properties

- | | |
|--------------------------------|---|
| Primary Purpose | Conservation Restriction |
| Conservation | Ownership other than Town of Wakefield |
| Recreation | State |
| Recreation & Conservation | Other Public |
| Water Supply Protection | Private |
| Historical/Cultural (Cemetery) | |
| School | |

Wakefield Open Space & Recreation Plan



Date: 4/7/2023
 Source: MassGIS, Town of Wakefield
 Note: This map is for informational purposes only and is not suitable for legal, engineering, or surveying purposes.