An architectural rendering of a modern, multi-story building with a flat roof and large windows. The building is surrounded by lush greenery, including trees and a courtyard with a wooden deck, outdoor seating, and yellow umbrellas. Two people are walking on a path in the foreground.

# 200 – 400 Quannapowitt Parkway

## Materials & Color Selection

May 31<sup>st</sup>, 2022

# Table of Contents

<b>NICHIHA MATERIAL EXAMPLES</b>	<b>P. 3</b>
<b>JAMES HARDIE MATERIAL EXAMPLES</b>	<b>P. 4</b>
<b>BUILDING 1 &amp; 2 ELEVATIONS &amp; MATERIALS</b>	<b>P. 5</b>
<b>BUILDING 3 ELEVATION &amp; MATERIALS</b>	<b>P. 6</b>
<b>BALCONY MATERIAL EXAMPLES</b>	<b>P. 7</b>
<b>BALCONY LIGHTING EXAMPLES</b>	<b>P. 8</b>
<b>BUILDING ENTRY LIGHTING EXAMPLES</b>	<b>P. 9</b>
<b>SOFFIT LIGHTING EXAMPLES</b>	<b>P. 10-11</b>
<b>LANDSCAPE PARKWAY LIGHT EXAMPLES</b>	<b>P. 12-13</b>
<b>LANDSCAPE SIGHT LIGHT EXAMPLES</b>	<b>P. 14-15</b>
<b>GARAGE SCREENING MATERIALS</b>	<b>P. 16</b>

*Materials shown are intended to represent design intent. As-built manufacturer and product subject to product availability bidding, and final design.*



WOOD -1  
FCW-1

**NICHIHA**  
VINTAGE WOOD - SPRUCE



WOOD -2  
FCW-2

**NICHIHA**  
VINTAGE WOOD - CEDAR





*Materials shown are intended to represent design intent. As-built manufacturer and product subject to product availability bidding, and final design.*

GREY SLATE

PEARL GREY

ARCTIC WHITE

KHAKI BROWN



**JAMES HARDIE**  
PLANK LAP SIDING



**JAMES HARDIE**  
VERTICAL SIDING

DARK GREY  
FCP-1

DARK GREY  
FCL-1

LIGHT GREY  
FCP-2

LIGHT GREY  
FCL-2

WHITE  
FCP-3

WHITE  
FCL-3

TAN  
FCP-3

TAN  
FCL-3

**JAMES HARDIE**  
VERTICAL SIDING

**JAMES HARDIE**  
PLANK LAP SIDING

**JAMES HARDIE**  
VERTICAL SIDING

**JAMES HARDIE**  
PLANK LAP SIDING

**JAMES HARDIE**  
VERTICAL SIDING

**JAMES HARDIE**  
PLANK LAP SIDING

**JAMES HARDIE**  
VERTICAL SIDING

**JAMES HARDIE**  
PLANK LAP SIDING

## BUILDING 1

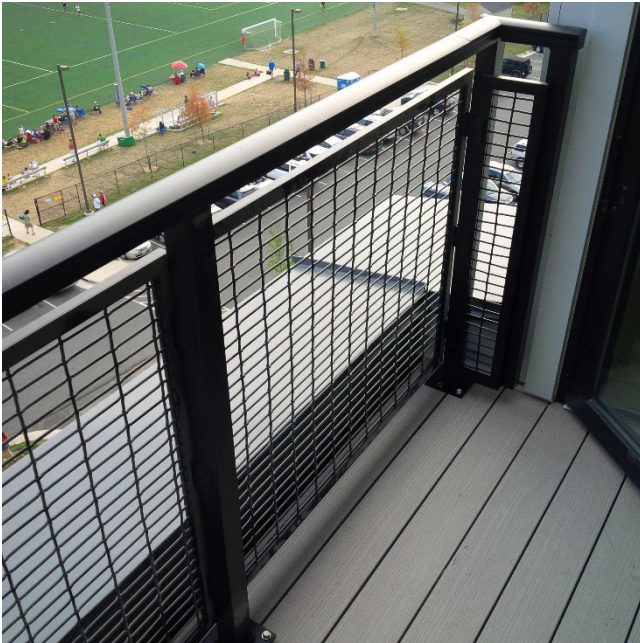


## BUILDING 2

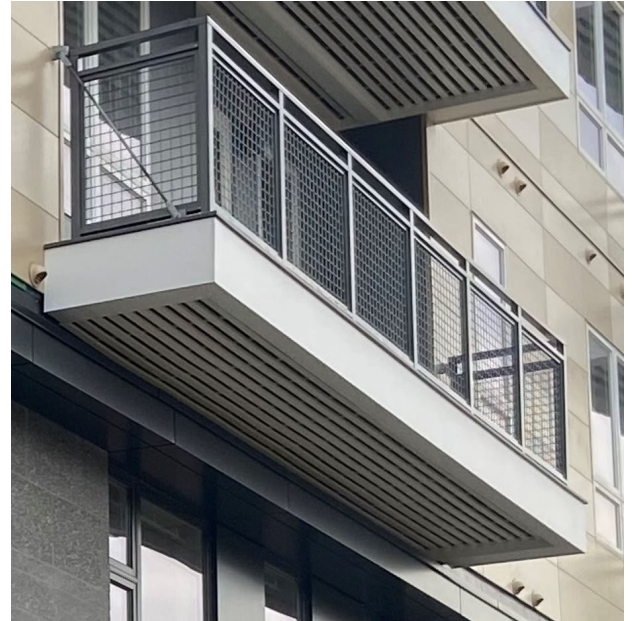


## 6





**WIRE MESH BALCONY RAILING**



**FIBER CEMENT TRIM & SOFFIT  
DETAILING**



**COMPOSITE DECKING**

## LED Directional Wall Light-3580/3591(Gpht/2 Lights)-OPEN BOX By BEGA

**LUMENS**  
LIGHT AND LIVING  
Call Us 877.445.4486

LED Directional Wall Light-3580/3591(Gpht/2 Lights)-OPEN BOX  
By BEGA

### Product Options

Finish: Graphite,  
Number of Lights: 2

### Details

Polyester Powder Coat finish  
Material: Aluminum, glass  
Dimmer Range: 0-10V  
ADA compliant  
CSA Certified  
Marine Grade  
Made In Germany

### Dimensions

2 Light Option Fixture: Height 8.5", Depth 5", Weight  
3.5Lbs

### Lighting

2

Lamp Type	LED Built-in
Total Lumens	346
Total Watts	8.60
Volts	120
Color Temp	3000 (Soft White)
Average Lifespan	50000.00
CRI	85
Equivalent Halogen, CFL or LED Bulb Can Be Used	No

### Additional Details

Product URL:  
<https://www.lumens.com/led-directional-wall-light-3580-3591gpht-2-lights-open-box-by-bega-BEG496471OB.html>  
Rating: CSA Certified  
ITEM#: BEG496471OB



Notes:

Prepared by:

Prepared for:  
Project:  
Room:  
Placement:  
Approval:





**Windfall LED Outdoor Wall Sconce**

By Tech Lighting



Windfall LED Outdoor Wall Sconce  
By Tech Lighting

Product Options

Finish: Black,  
Height: 24 in,  
Voltage: 120 Volt

Details

May be mounted vertically or horizontally  
IP65 rated for outdoor areas  
Powder coat finishes  
Impact-resistant, UV stabilized frosted acrylic lensing  
Designed by Sean Lavin  
Material: Die Cast Aluminum with Stainless Steel Hardware  
Dimmable when used with a ELV or TRIAC or 0-10V Dimmer (Not Included)  
ADA compliant, Title 24 compliant  
ETL Listed Wet  
Warranty: Limited 5 Year  
Made In China



Dimensions

24 in Option Fixture: Width 6", Height 24", Depth 4",  
Weight 4.63Lbs

Lighting

24 in

Lamp Type	LED Built-in
Total Lumens	183.60
Total Watts	20.00
Volts	120
Color Temp	3000 (Soft White)
Average Lifespan	60000.00
CRI	80
Equivalent Halogen, CFL or LED Bulb Can Be Used	No

Notes:

Prepared by:

Prepared for:  
Project:  
Room:  
Placement:  
Approval:

Additional Details

Product URL:  
<https://www.lumens.com/windfall-led-outdoor-wall-sconce-by-tech-lighting-LBL566201.html>  
Rating: ETL Listed Wet

ITEM#: LBL566201



## R4NC

### 4" LED Recessed Downlight: Universal New Construction Housing

Catalog No. \_\_\_\_\_

Type \_\_\_\_\_

Project \_\_\_\_\_

#### Specifications/Features

##### Housing/Mounting

Specification grade 4" New Construction housing, 4-3/4" aperture; 4-7/8" ceiling opening.  
16 Gauge galvanized steel housing with die-cast aluminum heat sink.

Requires minimum 3" clearance around fixture from insulation material. Thermal protection provided in case of improper insulation use.

Dual nailer hanger bars are adjustable for 16" and 24" center joists (14-1/4" to 24-1/2"). Nailer bars enable easy installation and may be extended to rest on T-bar ceilings. Optional clip-on T-bar hangers also available.

Quick-connect LED light engine enables easy installation and removal.

LED Drivers are fully accessible from below the ceiling and can be easily removed.

##### Electrical

UL8750 and Class 2 Compliant; RoHS Compliant, US only.  
Output over voltage, over-current and short circuit protection.  
Approved for through-circuit wiring. Max.: (6) 12 AWG (3in/3out).

Pre-wired junction box with convenient screwdriver pry-outs. (6) 1/2" and (1) 1/2" x 3/4" concentric knockouts.

Optional emergency battery pack with remote test switch is available.

##### Lamp

Light engine consists of a high output multi-chip LED array arranged into a single LED package, enabling precise optical control without requiring lensing to diffuse multiple LED sources.

Excellent fixture-to-fixture color consistency within a 3-step MacAdam Ellipse tolerance.

System designed and rated for 50,000 hours at 70% lumen maintenance.

##### Dimming

All R4NC downlights are available for non-dimming and dimming applications.

For a list of compatible dimmers, refer to the [Dimming Specifications](#) sheet.

##### Trims

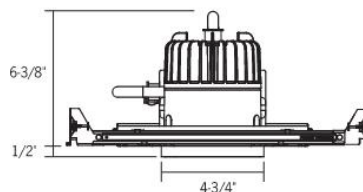
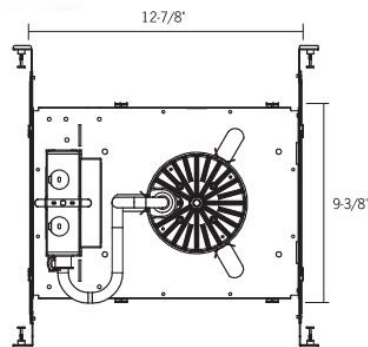
Specification Grade trims are available in several different styles and finishes for your space. Featuring a high quality Alzak™ finish; optically designed for reduced glare while maintaining maximum lumen output. See "4" LED Recessed Trims" spec sheet for information and details.

##### Warranty

This complete fixture is covered by ConTech's full five (5) year replacement guarantee after date of purchase.

##### Labels/Usage

cCSAus Certified to UL Standards. Suitable for damp locations.  
cCSAus Certified to UL924 Standard for Emergency Lighting.  
Energy Star certified with the following trims:  
C4322-PL, C4322-WHT and C4322-CLR (all beam distributions).  
The -C and -SL options are not Energy Star certified.  
Lutron and eldoLED dimming options are not Energy Star certified.  
Assembled in the USA.



Ceiling Opening: 4-7/8"

Ceiling Thickness: 1/2" – 1-1/2"

	Series 1	Series 2	Series 3	Series 4	Series 5	Series 6
<b>Input Wattage (W)</b>	10	14	20	28	37	43
<b>Input Current (A) 120/277</b>	.08/.04	.12/.06	.17/.08	.23/.11	.31/.14	.36/.17
<b>Input Voltage</b>						
Dimming (Triac, ELV, 0-10V)	120V AC, 50/60Hz					
	277V AC, 50/60Hz					
Lutron HiLume® Dimming	120V AC, 50/60Hz					
Lutron Eco-System® Dimming	120V AC, 50/60Hz					
	277V AC, 50/60Hz					
eldoLED ECOdrive/SOLOdrive/POWERdrive	120V AC, 50/60Hz					
	277V AC, 50/60Hz					
<b>Color Temp</b>	2700K/3000K/3500K/4000K					
<b>CRI Standard/High</b>	83 (80min) / 90+					
<b>Driver</b>						
Power Factor	> 0.90					
THD	< 20%					
<b>Dimming</b>						
Triac, ELV, 0-10V	10-100%					
Lutron®	1-100%					
eldoLED ECOdrive	1-100%					
eldoLED SOLOdrive	0.1-100%					
eldoLED POWERdrive DMX	0-100%					

**CONTECH**  
**LIGHTING** | a **LEVITON**  
company

## R4 Series

4" LED Recessed Downlight Trims

Catalog No. \_\_\_\_\_

Type \_\_\_\_\_

Project \_\_\_\_\_



### Specification Grade Specular Reflector

Specification grade specular reflector: narrow beam clear, medium beam clear, wide beam clear, platinum, platinum wheat, or white. OD: 5-11/16"; ID: 4-3/8"

Add "C" (clear lens) or "SL" (sandblast lens) after finish code for wet location approved trim.

- C4322N-CLR\*** - Narrow Beam (36°), Clear Reflector
- C4322M-CLR\*** - Medium Beam (54°), Clear Reflector
- C4322W-CLR\*** - Wide Beam (80°), Clear Reflector
- C4322-PL\*** - Platinum Reflector
- C4322-PLWHE\*** - Platinum Wheat Reflector
- C4322-WHT** - White Reflector

\*Available with White Painted Flange, add "-WPF" to part number



### Two Piece Reflector Trim

Two piece reflector: clear or white upper reflector, clear or platinum lower cone; Includes (1) LF20-CL glass lens. OD: 5-11/16"; ID: 3-1/2"

Approved for dry/damp locations. Approved for wet locations when glass lens is installed.

- C4321-CLR-(CLR,PL)** - Clear Reflector/Clear or Platinum Lower Cone
- C4321-WHT-(CLR,PL)** - White Reflector/Clear or Platinum Lower Cone



### Two Piece Reflector/Baffle Trim

Two piece reflector: clear or white upper reflector, black or white lower baffle; Includes (1) LF20-CL glass lens. OD: 5-11/16"; ID: 3-1/2"

Approved for dry/damp locations. Approved for wet locations when glass lens is installed.

- C4321-CLR-(B,P)** - Clear Reflector/Black or White Lower Baffle
- C4321-WHT-(B,P)** - White Reflector/Black or White Lower Baffle



### Two Piece Reflector Trim with Lens

Two piece reflector with lens: Clear or white upper reflector, clear or platinum lower cone; regressed prismatic convex lens, Wet Location Listed. OD: 5-11/16"; ID: 3-7/8"

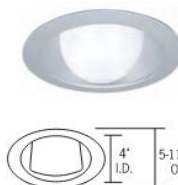
- C4327-CLR-(CLR,PL)** - Clear Reflector/Clear or Platinum Lower Cone
- C4327-WHT-(CLR,PL)** - White Reflector/Clear or Platinum Lower Cone



### Two Piece Reflector/Baffle Trim with Lens

Two piece reflector with lens: Clear or white upper reflector, black or white lower baffle with regressed prismatic convex glass lens; 1-1/2" Regress. Wet Location Listed. OD: 5-11/16"; ID: 3-7/8"

- C4327-CLR-(B,P)** - Clear Reflector/Black or White Lower Baffle
- C4327-WHT-(B,P)** - White Reflector/Black or White Lower Baffle



### Lensed Wall Wash Trim

Lensed Wall Wash Trim; Clear, Platinum or White Reflector. OD: 5-11/16"; ID: 4"

- C4323-CLR\*** - Clear Reflector
- C4323-PL\*** - Platinum Reflector
- C4323-WHT** - White Reflector

\*Available with White Painted Flange, add "-WPF" to part number



### Floating Glass Trim

Floating glass disc; clear or white reflector. 1-1/4" Drop from ceiling. Glass OD: 6"

**CTR4325L-(CLR,WHT)-P**



### Floating Glass Ring

Floating glass ring; clear or white reflector. 1-1/4" Drop from ceiling; 3-1/2" center hole. Glass OD: 6"

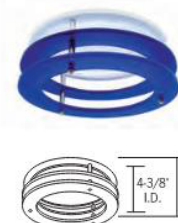
**CTR4326L-(CLR,WHT)-P**



### Floating Single Acrylic Ring

Single floating colored acrylic ring; clear or white reflector. 1-1/2" Drop from ceiling. Acrylic Ring OD: 6"; ID: 4-3/8"

**CTR4324L-(CLR,WHT)-P**  
**1AR4(B,F,G,R,Y)**



### Floating Double Acrylic Ring

Stacked floating colored acrylic rings; clear or white reflector. 2-3/4" Drop from ceiling. Acrylic Ring OD: 6"; ID: 4-3/8"

**CTR4324L-(CLR,WHT)-P**  
**2AR4(B,F,G,R,Y)**

Acrylic Ring Finishes: **-B** (blue), **-F** (frosted), **-G** (green), **-R** (red), **-Y** (yellow)

1-847-559-5500

www.contechlighting.com

Please Recycle

All specifications subject to change without notice.



## PARKWAY LIGHT



**GARDCO**  
by @signify

**Site & Area**

**EcoForm**

ECF-S small area light

Gardco EcoForm Gen-2 combines economy with performance in an LED area luminaire. Capable of delivering up to 27,800 lumens or more in a compact, low profile LED luminaire, EcoForm offers a new level of customer value. EcoForm features an innovative retrofit arm kit, simplifying site conversions to LED by eliminating the need to drill additional holes in most existing poles. Integral control systems available for further energy savings. Includes Service Tag, our innovative way to provide assistance throughout the life of the product.

Project: \_\_\_\_\_  
Location: \_\_\_\_\_  
Cat.No: \_\_\_\_\_  
Type: \_\_\_\_\_  
Lamps: \_\_\_\_\_ Qty: \_\_\_\_\_  
Notes: \_\_\_\_\_

### Ordering guide

example: ECF-S-64L-900-NW-G2-AR-5-120-HIS-MGY

Prefix	Number of LEDs	Drive Current	LED Color - Generation	Mounting	Distribution	Voltage	Options					Finish
							Dimming controls	Motion sensing lens	Photo-sensing	Electrical	Luminaire	
<b>ECF-S</b>												
ECF-S EcoForm site and area, small	32L 32 LEDs (2 modules)	365 365 mA 530 530 mA 700 700 mA 1A 1050 mA 1.2A 1200 mA	<b>WW-G2</b> Warm White 3000K, 70 CRI Generation 2  <b>NW-G2</b> Neutral White 4000K, 70 CRI Generation 2  <b>CW-G2</b> Cool White 5000K, 70 CRI Generation 2	<b>AR</b> Arm Mount (standard) <sup>2</sup>  <i>The following mounting kits must be ordered separately (See accessories)</i> <b>SF</b> Slip Fitter Mount <sup>3</sup> (fits to 2 1/4" O.D. tenon)  <b>WS</b> Wall mount with surface conduit rear entry permitted  <b>RAM</b> Retrofit arm mount kit <sup>7</sup>	<b>Type 2</b> 2 Type 2 2-90 Rotated left 90°  2-270 Rotated right 270°  <b>Type 3</b> 3 Type 3 3-90 Rotated left 90° 3-270 Rotated right 270°  <b>Type 4</b> 4 Type 4 4-90 Rotated left 90° 4-270 Rotated right 270°  <b>Type 5</b> 5 Type 5 5W Type 5W	120 120V 208 208V 240 240V 277 277V 347 347V 480 480V UNV 120-277V (50/60Hz) HVV 347-480V (50/60Hz)	<b>DD</b> 0-10V External dimming (by others) <sup>4</sup> <b>DCC</b> Dual Circuit Control <sup>4,5,6</sup> <b>FAWS</b> Field Adjustable Wattage Selector <sup>4,5</sup> <b>SW</b> Interface module for SiteWise <sup>4,6,7</sup> <b>LLC</b> Integral wireless module <sup>4,6,7</sup> <b>BL</b> Bi-level functionality <sup>4,7</sup>  <b>DynaDimmer</b> : Automatic Profile Dimming <b>CS50</b> Safety 50% Dimming, 7 hours <sup>8,9</sup> <b>CM50</b> Median 50% Dimming, 8 hours <sup>8,9</sup> <b>CS30</b> Safety 30% Dimming, 7 hours <sup>8,9</sup> <b>CM30</b> Median 30% Dimming, 8 hours <sup>8,9</sup>	<b>IMR13</b> Integral with #3 lens <sup>15</sup> <b>IMR17</b> Integral with #7 lens <sup>15</sup>	<b>PCB</b> Photocontrol Button <sup>16</sup> <b>TLRD5</b> Twist Lock Receptacle 5 Pin <sup>10</sup> <b>TLRD7</b> Twist Lock Receptacle 7 Pin <sup>10</sup> <b>TLRPC</b> Twist Lock Receptacle w/ Photocell <sup>16,17</sup>	<b>Fusing</b> <b>F1</b> Single (120, 277, 347VAC) <sup>9</sup> <b>F2</b> Double (208, 240, 480VAC)  <b>Pole Mount Fusing</b> <b>FP1</b> Single (120, 277, 347VAC) <sup>9</sup> <b>FP2</b> Double (208, 240, 480VAC) <b>FP3</b> Canadian Double Pull (208, 240, 480VAC) <sup>9</sup> <b>Surge Protection</b> (10KA standard) <b>SP2</b> Increased 20KA	<b>Square Pole Adapter</b> included in standard product <b>TB</b> Terminal Block <sup>11</sup> <b>RPA</b> Round Pole Adapter (fits to 3"-3 9/8" O.D. pole) <sup>11</sup> <b>HIS</b> Internal Housing Side Shield <sup>14</sup>	<b>Textured</b> <b>BK</b> Black <b>WH</b> White <b>BZ</b> Bronze <b>DGY</b> Dark Gray <b>MGY</b> Medium Gray  <b>Customer specified</b> <b>RAL</b> Specify optional color or RAL (ex: RAL7024) <b>CC</b> Custom color (Must supply color chip for required factory quote)

1. BL-IMR13/7 equipped with out-boarded sensor housing when voltage is HVU (347-480V)
2. Mounts to a 4" round pole with adapter included for square poles. Limited to a maximum of 45 degrees aiming above horizontal.
4. Not available with other dimming control options.
5. Not available with motion sensor.
6. Not available with photocell.
7. Available only in 120 or 277V.

8. Not available in 347 or 480V
9. Must specify input voltage.
10. Dimming will not be connected to NEMA receptacle if ordering with other control options.
11. Not available in 480V. Order photocell separately with TLRD5/7.
12. Not available with DCC.
13. Not available with SF and WS. RPAs provided with black finish standard.

14. HIS not available with Type 5 and 5W optics.
15. Not available with DD, DCC, and FAWS dimming control options.
16. Not available with DD, DCC, FAWS and LLC dimming control options.
17. Must specify a motion sensor lens.

PARKWAY LIGHT - POLE

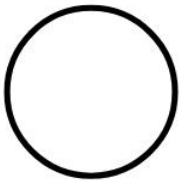


**GARDCO**  
by  Signify

Pole/Bracket

Site and Area Poles

Straight Round Aluminum Tenon Base



The Gardco RA straight aluminum pole consists of a one-piece round extruded aluminum lighting standard mounted to a structural quality carbon galvanized steel base tenon. This construction offers the corrosion resistance and flexibility of aluminum with the strength and integrity of steel. The poles are finished with either Architectural Class 1 anodizing or electrostatically applied TGIC polyester powdercoat.

Project:

Location:

Cat.No:

Type:

Lamps:  Qty:

Notes:

Order Guide						example: RA4-STB-15-D1-BRP	
	Prefix	Base	Height	Wind Factor Code*	Drilling	Finish	Options
		STB					
RA4		STB	10	-	D1 1 Way	BRP Bronze Paint BLP Black Paint WP White Paint NP Natural OC Aluminum Paint Optional Color Paint (Specify RAL designation ex: OC-RAL7024) SC Special Color Paint (Specify. Must supply color chip.)	DR Duplex Receptacle GFCI Ground Fault Receptacle VDA Vibration Dampener  Nipples and Couplings NL Nipple - External thread CL Coupling - Internal thread Indicate size (1/2", 3/4", 1", 1 1/4", 1 1/2".) Indicate height above base and orientation to hand hole. See Pole Orientation Information on Page 4.  Single Mount Bulbhorn Brackets* A15BH-19 Single - 19" OD A15BH-24 Single - 24" OD A215BH-19 2-Tenon - 19" OD A215BH-24 2-Tenon - 24" OD Indicate height above base and orientation to hand hole. See Pole Orientation Information on Page 4.
			12		D2 2 Way		
			15		D2@90 2 Way at 90°		
RA4.5			20	L	D3 3 Way		
				M	D3@120 3 Way at 120°		
				H	D4 4 Way		
RA5			10	-	T2 2 3/8" OD Tenon		
			12		T4 4" OD Tenon		
			15				
			18				
			20				
			25				
			28				
			30				

\*Refers to relative strength based on wind load factors. L = Light M = Medium H = Heavy





SIGHT LIGHT – POST TOP

GARDCO

by @ignify

Site & Area

PureForm

PPT post top  
with comfort optics

Gardco PureForm LED post top features a sleek, low profile design. Comfort optics are designed to enhance visual comfort by reducing glare. Type 1, 2, 3, and 5 optical distributions are available with lumen output up to 9000 lumens. A full range of control options provides additional energy savings. Optional integral emergency battery backup is available for path-of-egress illumination.

Project:

Location:

Cat.No:

Type:

Lamps:  Qty:

Notes:

Ordering guide

example: PPT-140L-450-NW-G2-T3-1-UNV-DGY

Prefix	Number of LEDs	Drive Current	LED Color – Generation	Mounting	Distribution	Emergency	Voltage
PPT							
PPT PureForm post top, comfort optics	140L 140 LEDs	450 450 mA 650 650 mA 1150 1150 mA <sup>1</sup> 1675 1675 mA <sup>1</sup> 2100 2100 mA <sup>1,2</sup>	WW-G2 Warm White 3000K, 70 CRI Generation 2  NW-G2 Neutral White 4000K, 70 CRI Generation 2  CW-G2 Cool White 5000K, 70 CRI Generation 2  WY-G2 Warm Yellow 2700K, 80 CRI Generation 2 <sup>3</sup>  BW-G2 Balanced White 3500K (80 CRI) Generation 2 <sup>3</sup>  AM-G2 Amber Generation 2 <sup>1,10</sup>	T3 Mounts to a 3" x 4" Tenon (standard)  T2 Mounts to a 2-3/8" x 4" Tenon (must be ordered and shipped as a separate accessory)	1 Comfort Type 1 2 Comfort Type 2 3 Comfort Type 3 5 Comfort Type 5	Leave blank for no battery  EBPC Emergency battery pack cold weather <sup>2,4,5,6,7</sup>  EBP Emergency battery pack <sup>1,4,5,7</sup>	120 120V 208 208V 240 240V 277 277V 347 347V 480 480V UNV 120-277V (50/60Hz) HVV 347-480V (50/60Hz)
Options							
Dimming controls		Motion sensing	Photo-sensing	Electrical/Shield		Finish	
DD FAWS SW LLC BL	0-10V External dimming (by others) <sup>4</sup> Field Adjustable Wattage Selector <sup>4,5</sup> Interface module for SiteWise <sup>4,6,8</sup> Integral wireless module <sup>4,6,7,14</sup> Bi-level functionality <sup>4,14</sup>	IMR13 Integral with #3 lens <sup>11</sup>	PCB Photocontrol Button <sup>7,8</sup> TLRD5 Twist Lock Receptacle 5 Pin <sup>10,15</sup> TLRD7 Twist Lock Receptacle 7 Pin <sup>10,15</sup> TLRPC Twist Lock Receptacle w/Photocell <sup>10,15</sup>	Fusing F1 Single (120, 277, 347VAC) <sup>9</sup> F2 Double (208, 240, 480VAC) <sup>9</sup> F3 Canadian Double Pull (208, 240, 480VAC) <sup>9</sup>	Textured BK Black WH White BZ Bronze DGY Dark Gray MGY Medium Gray		
DynaDimmer: Automatic Profile Dimming <sup>4,7</sup> CS50 Security 50% Dimming, 7 hours CM50 Median 50% Dimming, 8 hours CS30 Security 30% Dimming, 7 hours CM30 Median 30% Dimming, 8 hours				Surge Protection (10kA standard) SP2 Increased 20kA EHS External house side shield (factory installed)	Customer specified RAL Specify optional color or RAL (ex: RAL7024) CC Custom color (Must supply color chip for required factory quote)		

1. 1150, 1675, and 2100mA not available with emergency battery backup (EBP).  
2. 2100mA not available with emergency battery backup cold weather (EBPC).  
3. Extended lead times apply. Contact factory for details.  
4. Not available with other control options.  
5. Not available with motion sensor.
6. Not available with photocontrol.  
7. Not available in 347 or 480V.  
8. Available only in 120 or 277V.  
9. Must specify input voltage.  
10. Dimming will not be connected to NEMA receptacle if ordering with other control options.
11. Not available in 480V.  
12. Not available in 2100mA.  
13. Not available with DD and FAWS dimming control options.  
14. Must specify a motion sensor lens.  
15. Cannot be combined with HVU and BL-IMR13.



**MANUFACTURER: McNICHOLS**

*Materials shown are intended to represent design intent. As-built manufacturer and product subject to product availability bidding, and final design.*

## McNICHOLS® PERFORATED METAL

**McNICHOLS** carries the largest inventory of Perforated Metal products in North America with a vast selection of sizes, gauges and hole types available. In both high-end and industrial settings, Perforated Metal brings strength and style to enclosures, partitions, sign panels, guards, screens and other structures. This dynamic product line offers ventilation, versatility and a high strength-to-weight ratio. Perforated Metal is also an excellent product for filtration (sound, liquid, light, etc.) applications. **McNICHOLS** stocks Perforated Metal in a variety of materials including Aluminum, Carbon Steel, Galvanized Steel, Stainless Steel and even Plastic!

### McNICHOLS® PERFORATED METAL

#### Specifications

- 3" Round Holes
- 4" Straight Centers
- .1250" Thick (8 Gauge) Aluminum
- Clear Anodized Finish

#### Features

- Aesthetic Appeal
- Corrosion Resistance
- Durability
- Insulation
- Low Maintenance
- Strength
- Solar Shading
- Ventilation

\* ALL METAL CAN BE PAINTED TO DESIRED COLOR

#### ROUND PERFORATED METAL

